

Hardware Requirements to Install Windows 7 (32bit)

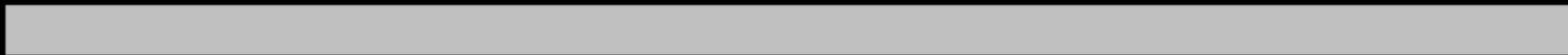
| | Minimum | Recommended | Maximum |
|-----------------------|-------------------|-------------------|-----------------|
| PROCESSOR | Pentium IV 233MHz | Pentium IV 300MHz | Upto Core i7 |
| RAM | 512MB | 1024MB | 4 GB |
| HARDDISK SPACE | 7 GB | 10 GB | More than 10 GB |

Hardware Requirements to Install Windows 7 (64bit)

| | Minimum | Recommended | Maximum |
|-----------------------|-------------------|-------------------|-----------------|
| PROCESSOR | Pentium IV 233MHz | Pentium IV 300MHz | Upto Core i7 |
| RAM | 512MB | 1024MB | 192 GB |
| HARDDISK SPACE | 7 GB | 10 GB | More than 10 GB |



windows is loading files...





Starting Windows

Install Windows



Windows 7

Language to install:

Time and currency format:

Keyboard or input method:

Enter your language and other preferences and click "Next" to continue.

Copyright © 2009 Microsoft Corporation. All rights reserved.

Install Windows



Windows 7

[Install now](#) 

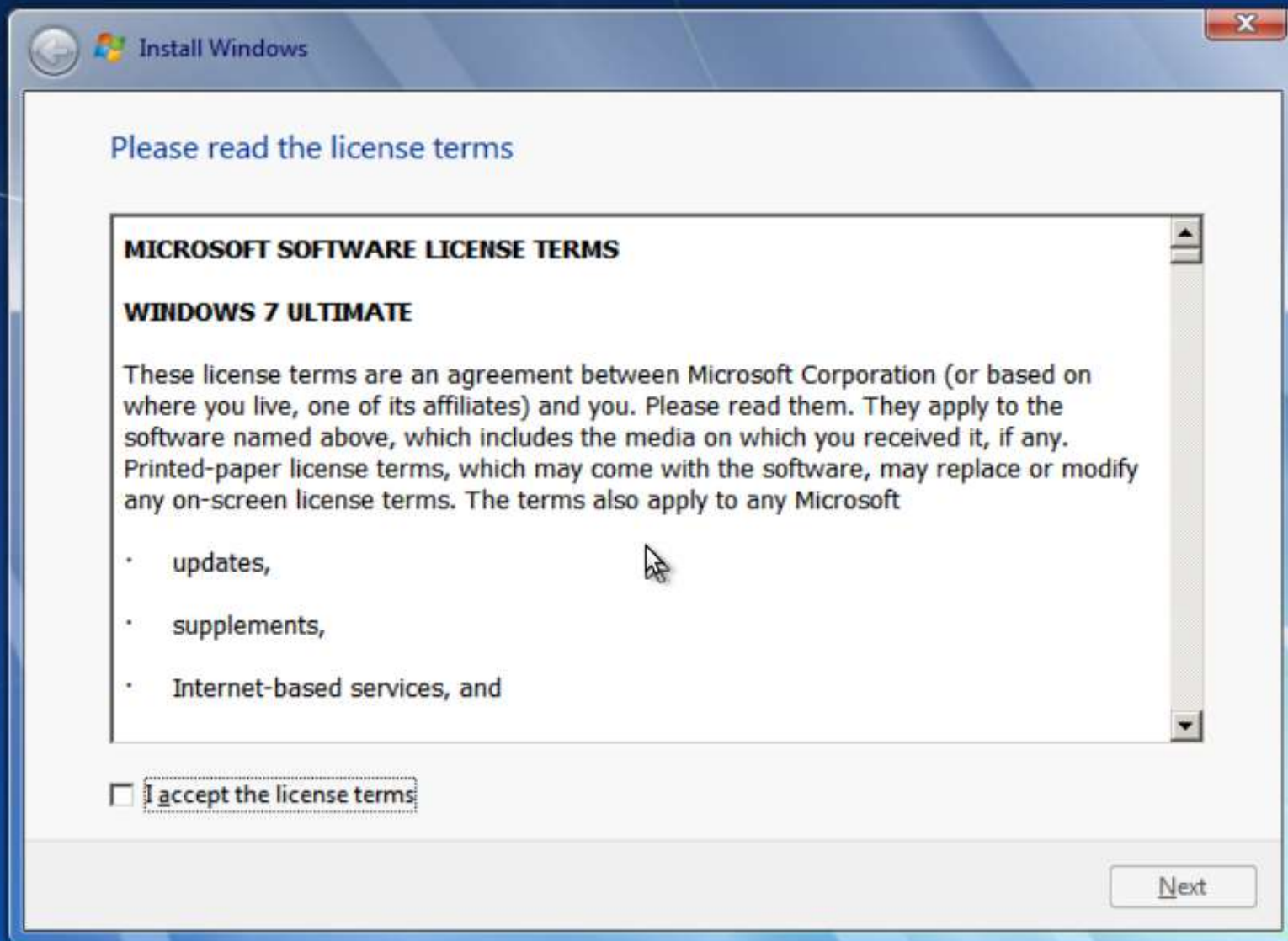
[What to know before installing Windows](#)

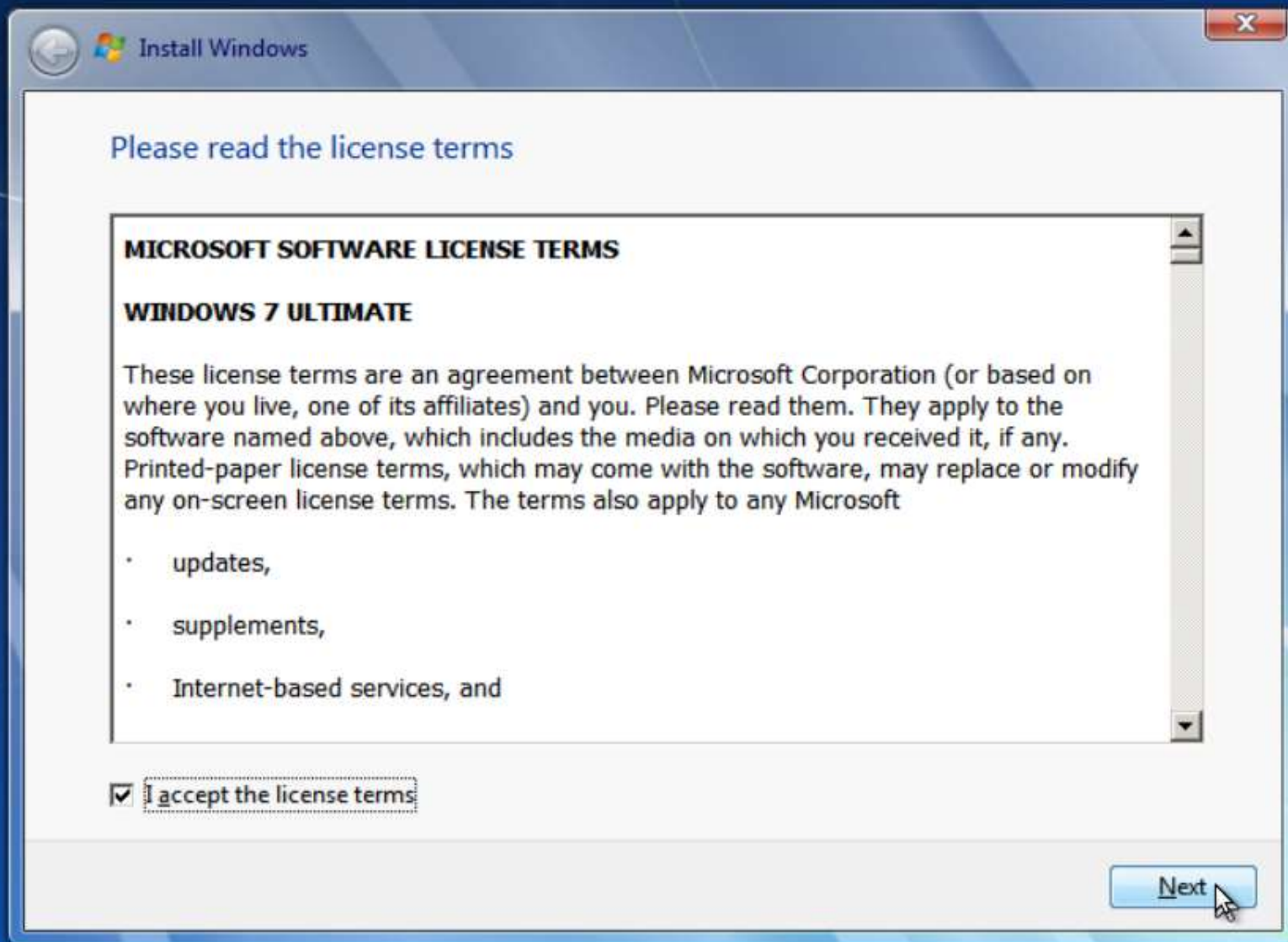
[Repair your computer](#)

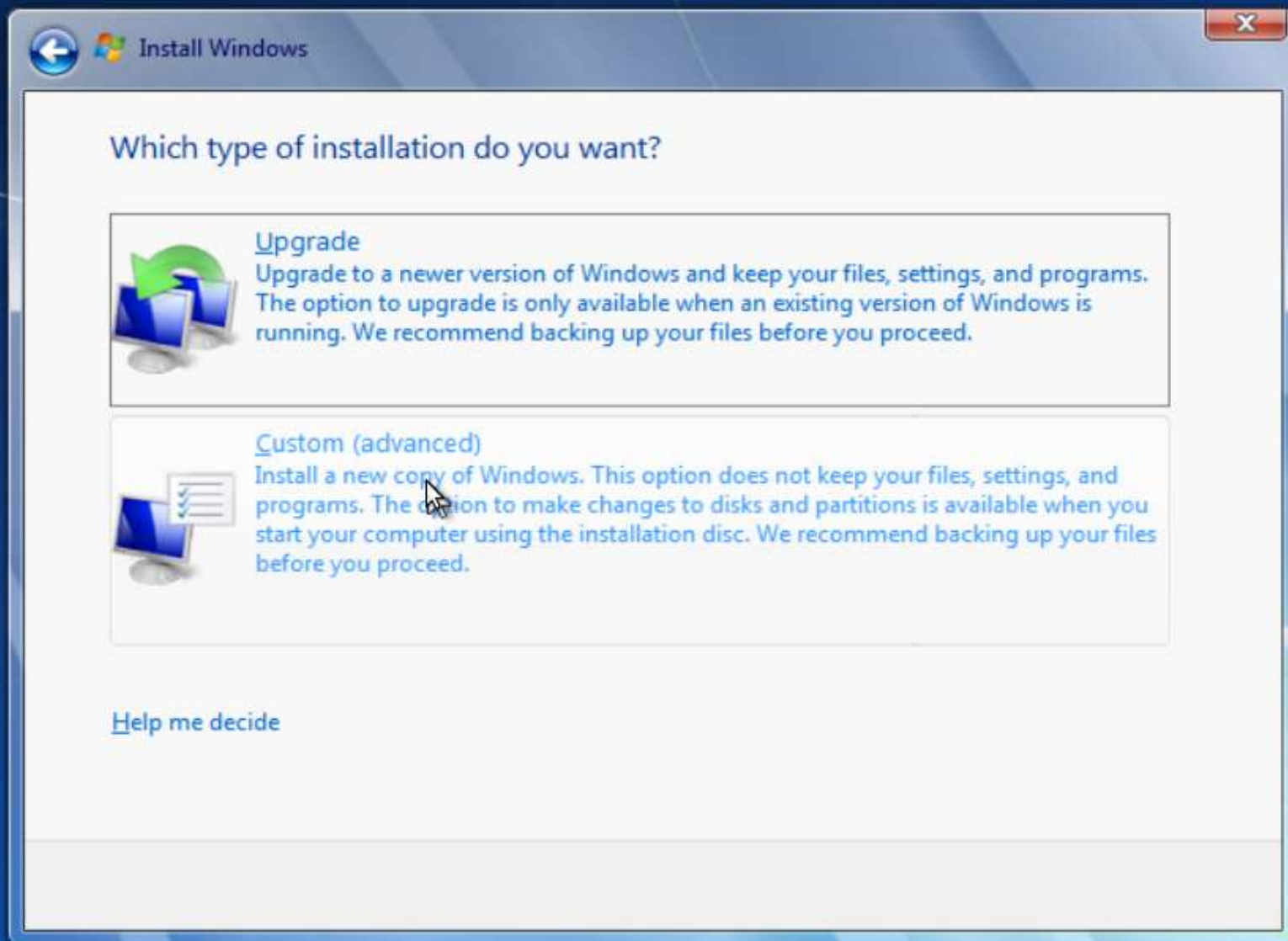
Copyright © 2009 Microsoft Corporation. All rights reserved.

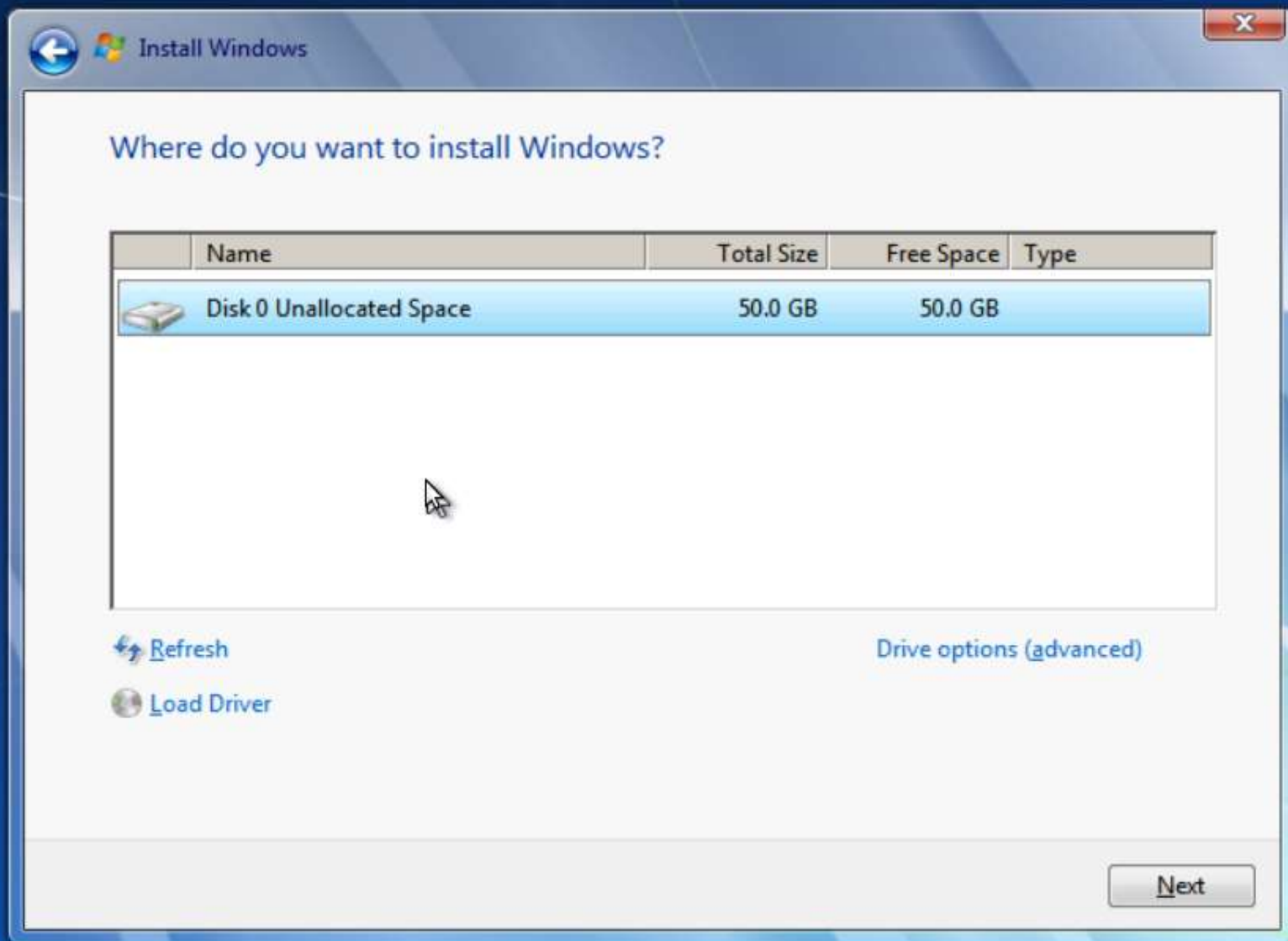
Setup is starting...

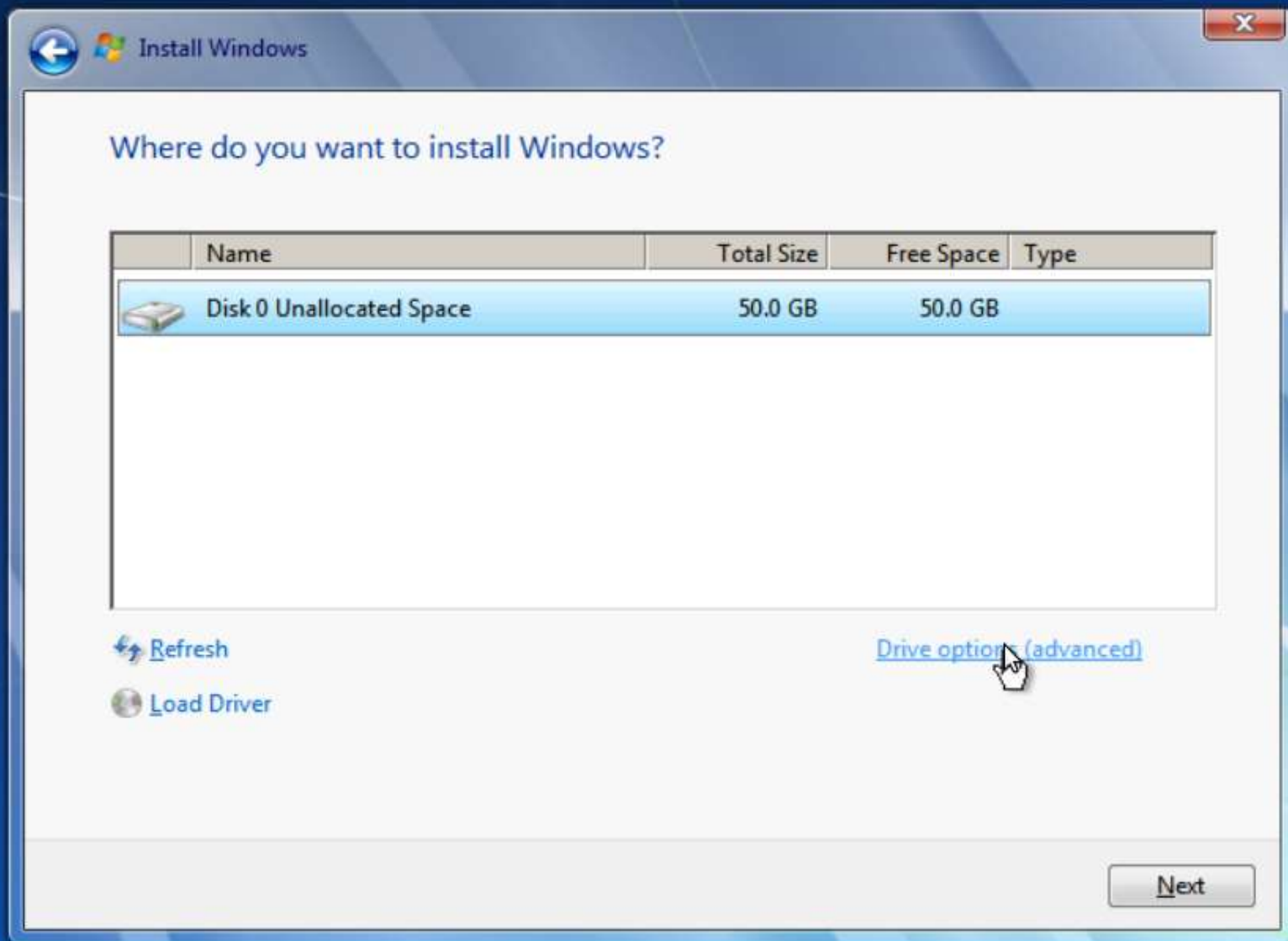


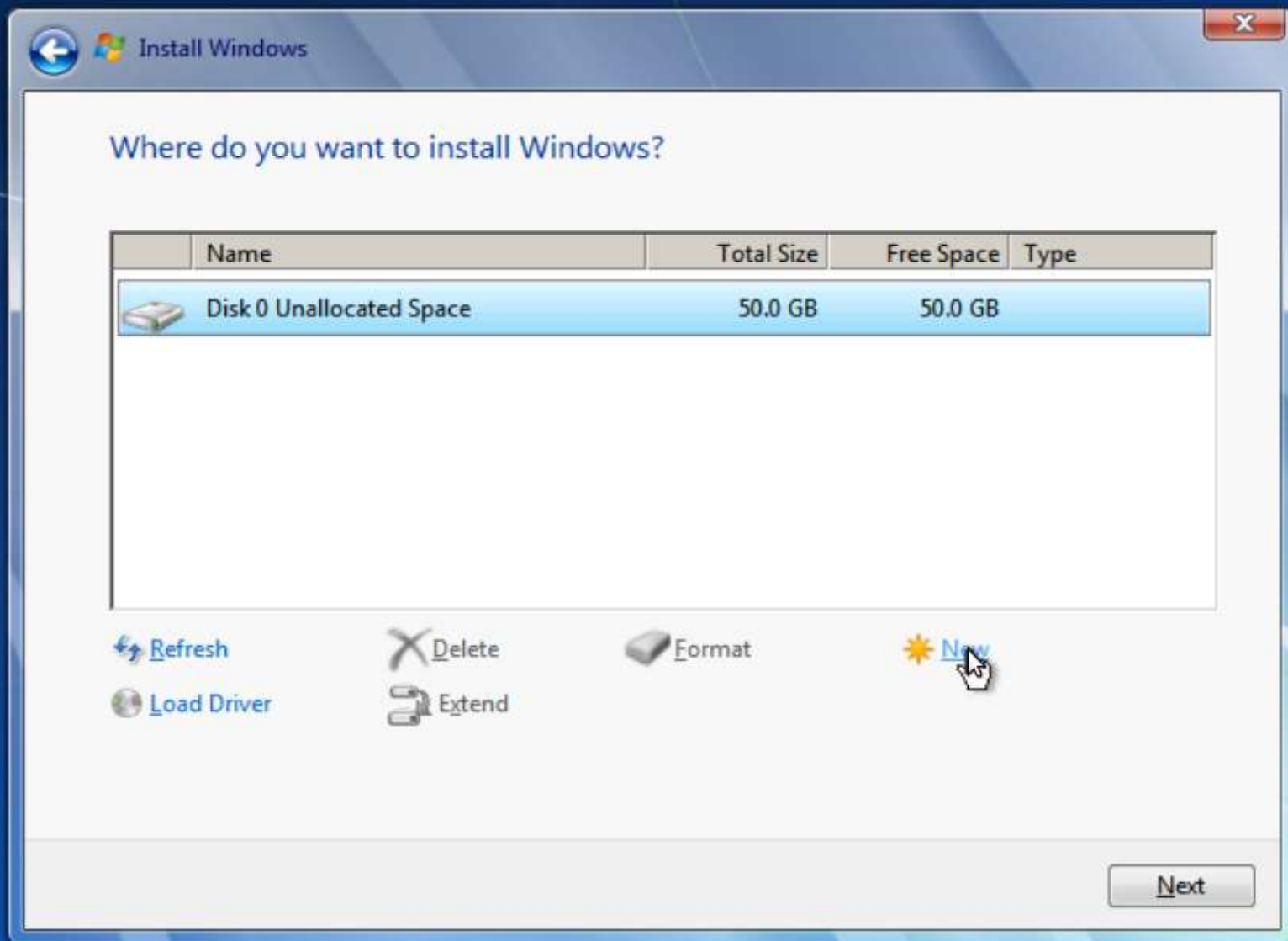


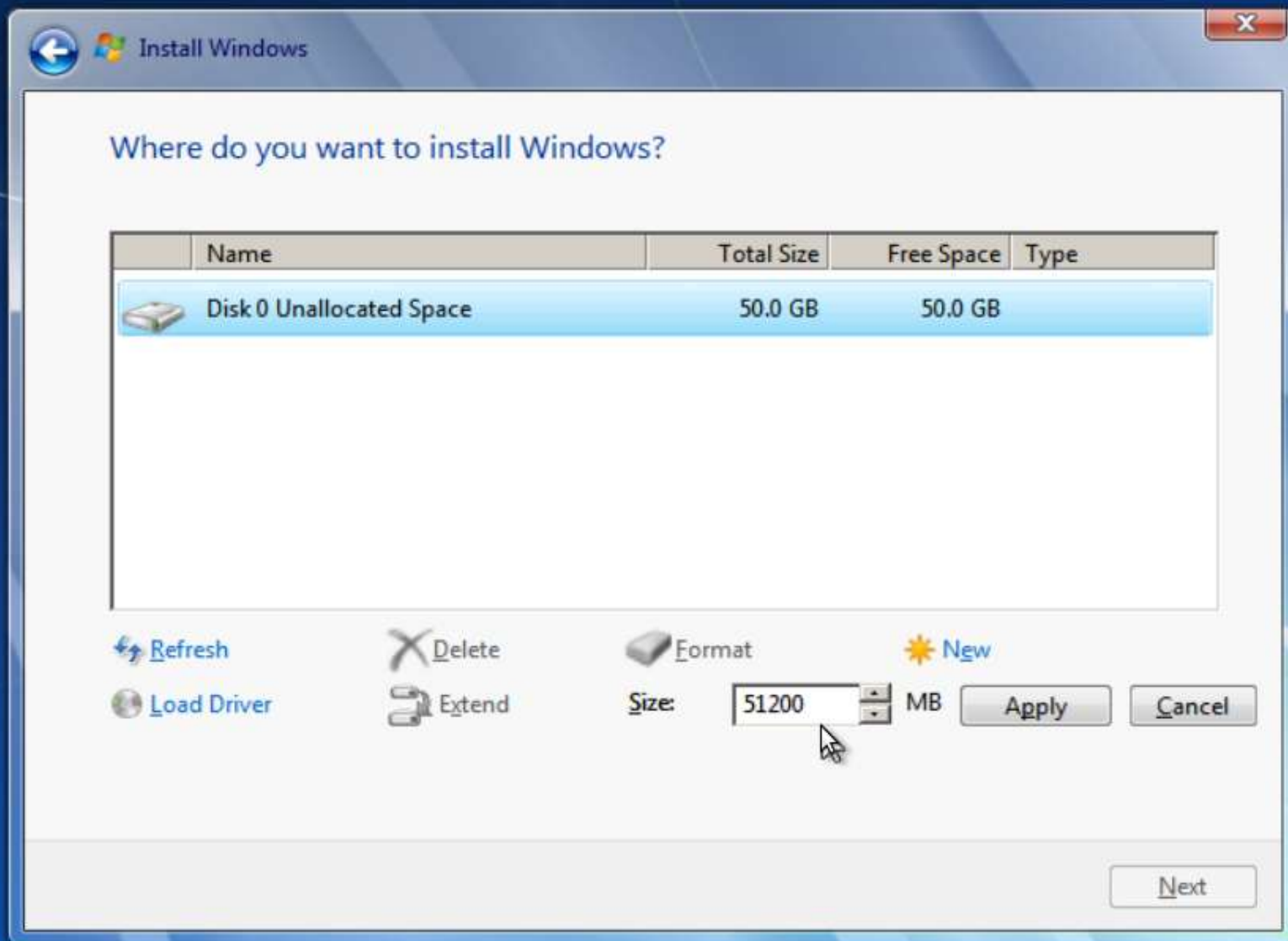


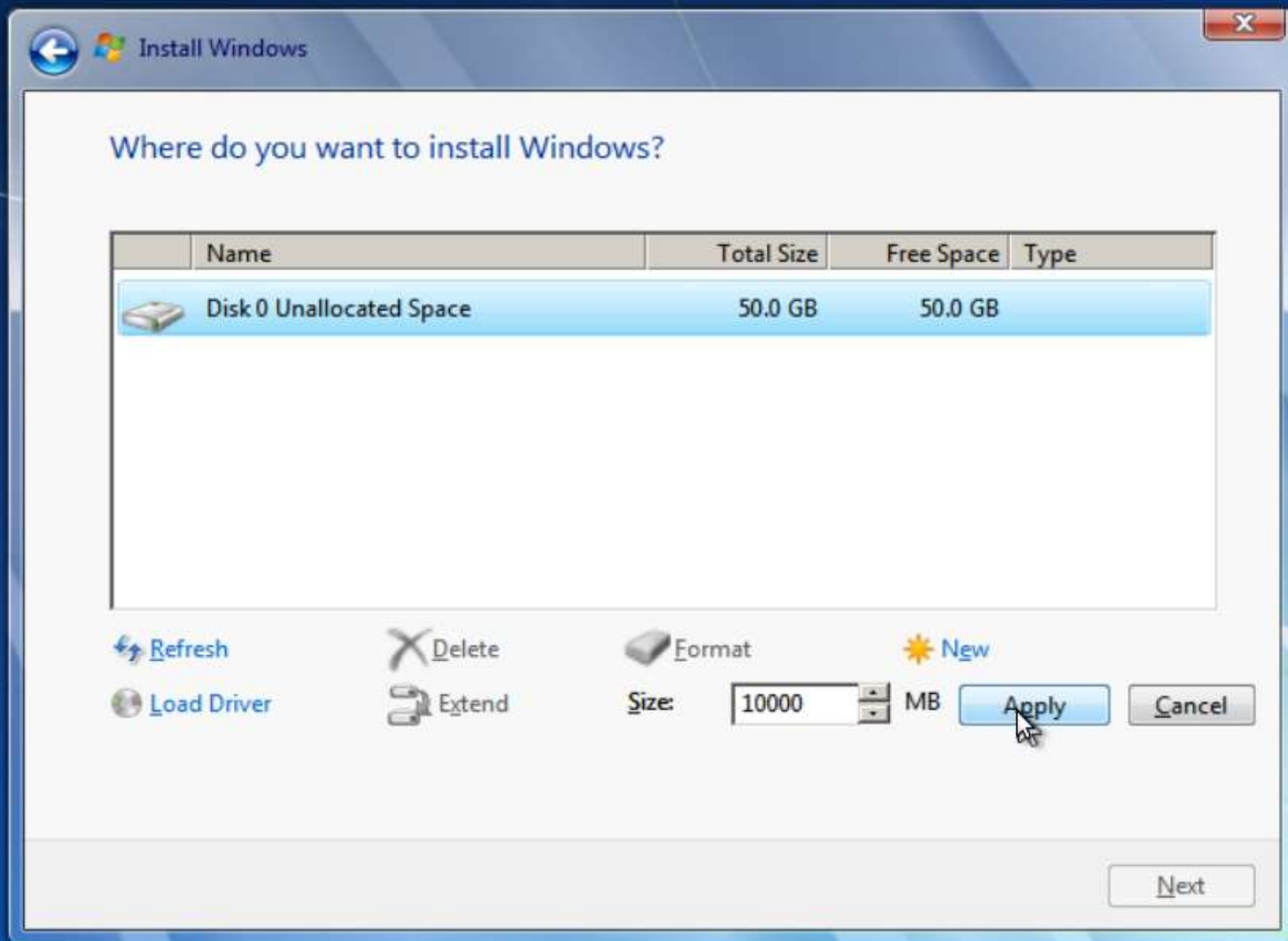


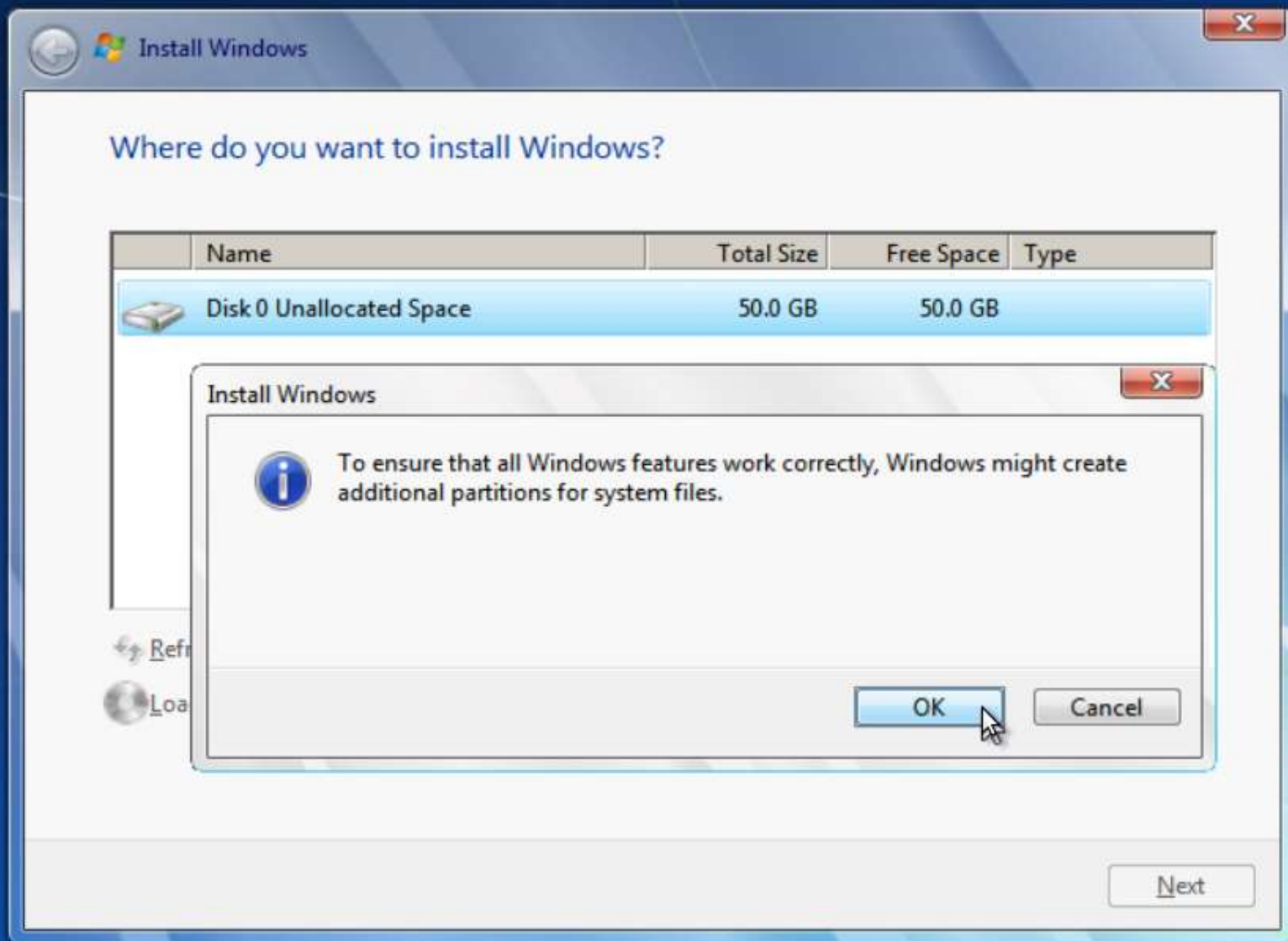


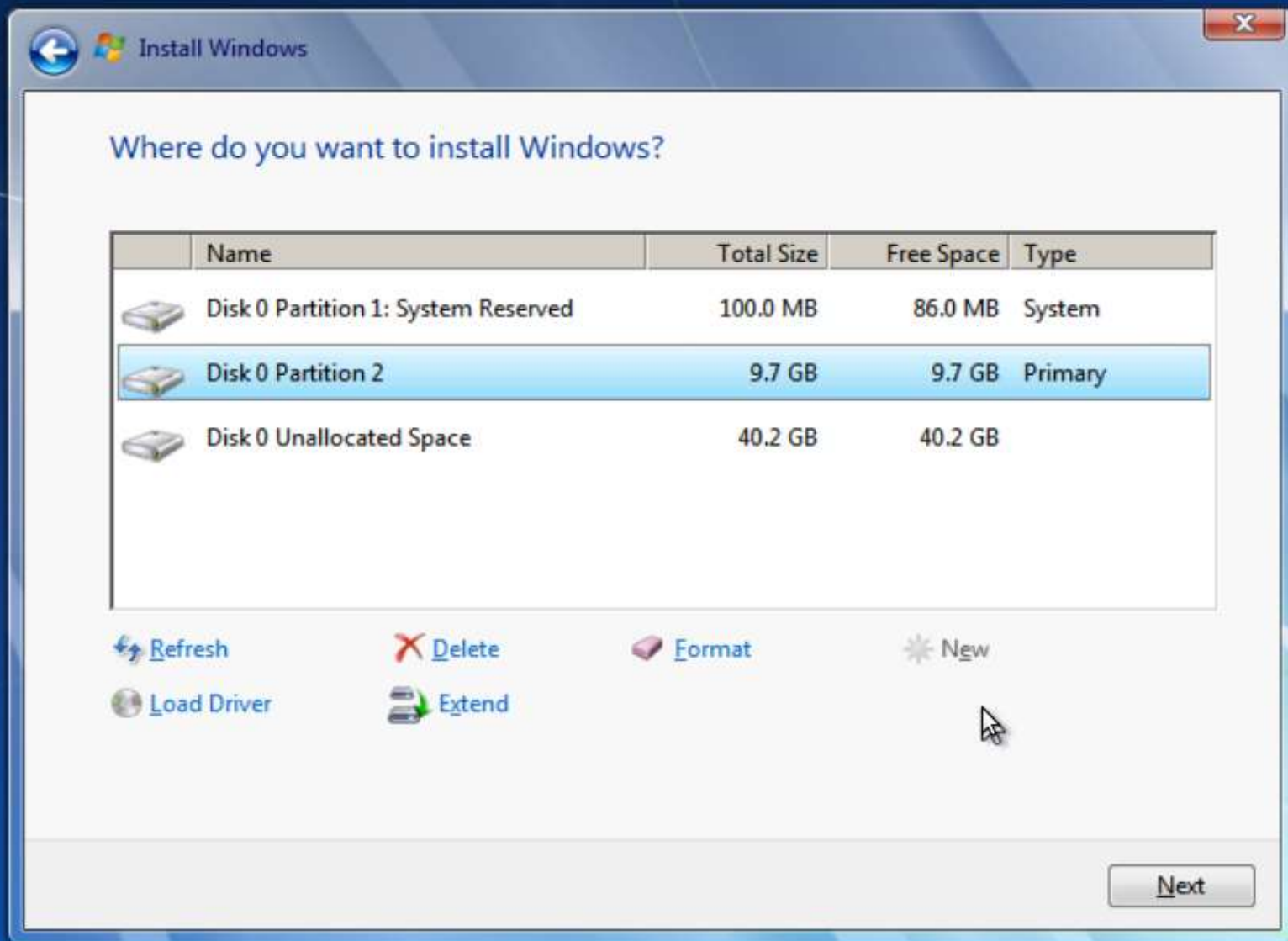


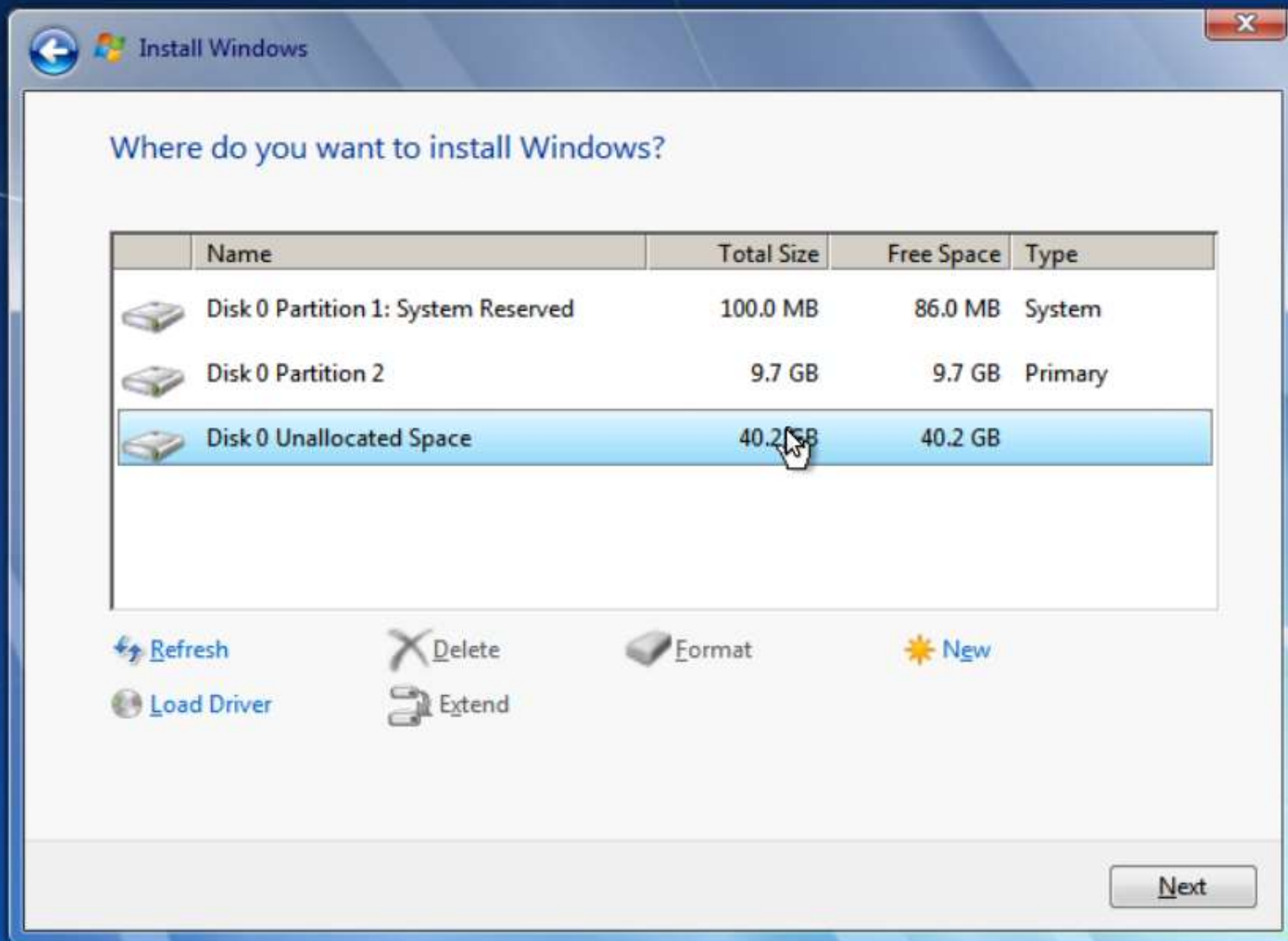


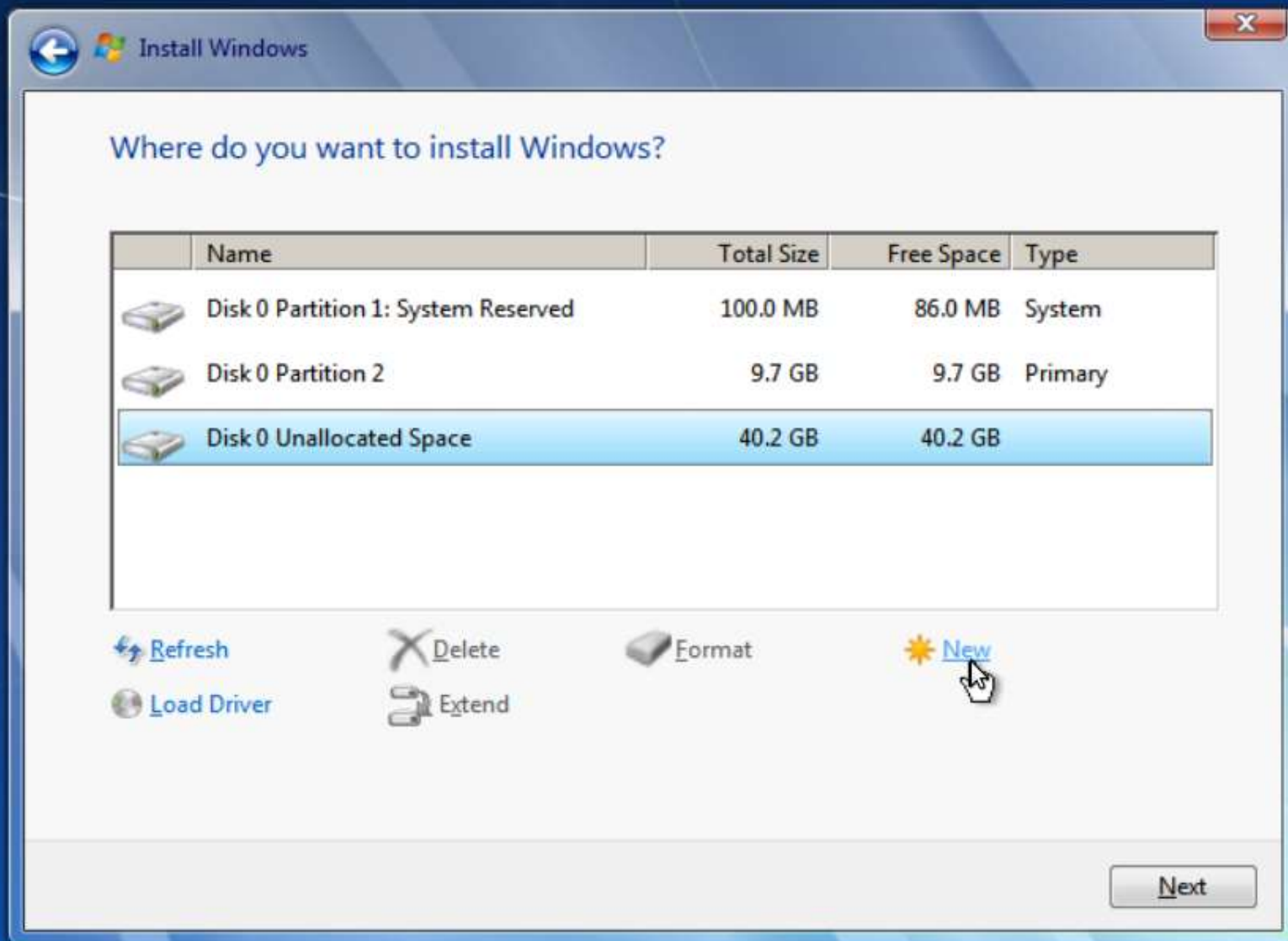


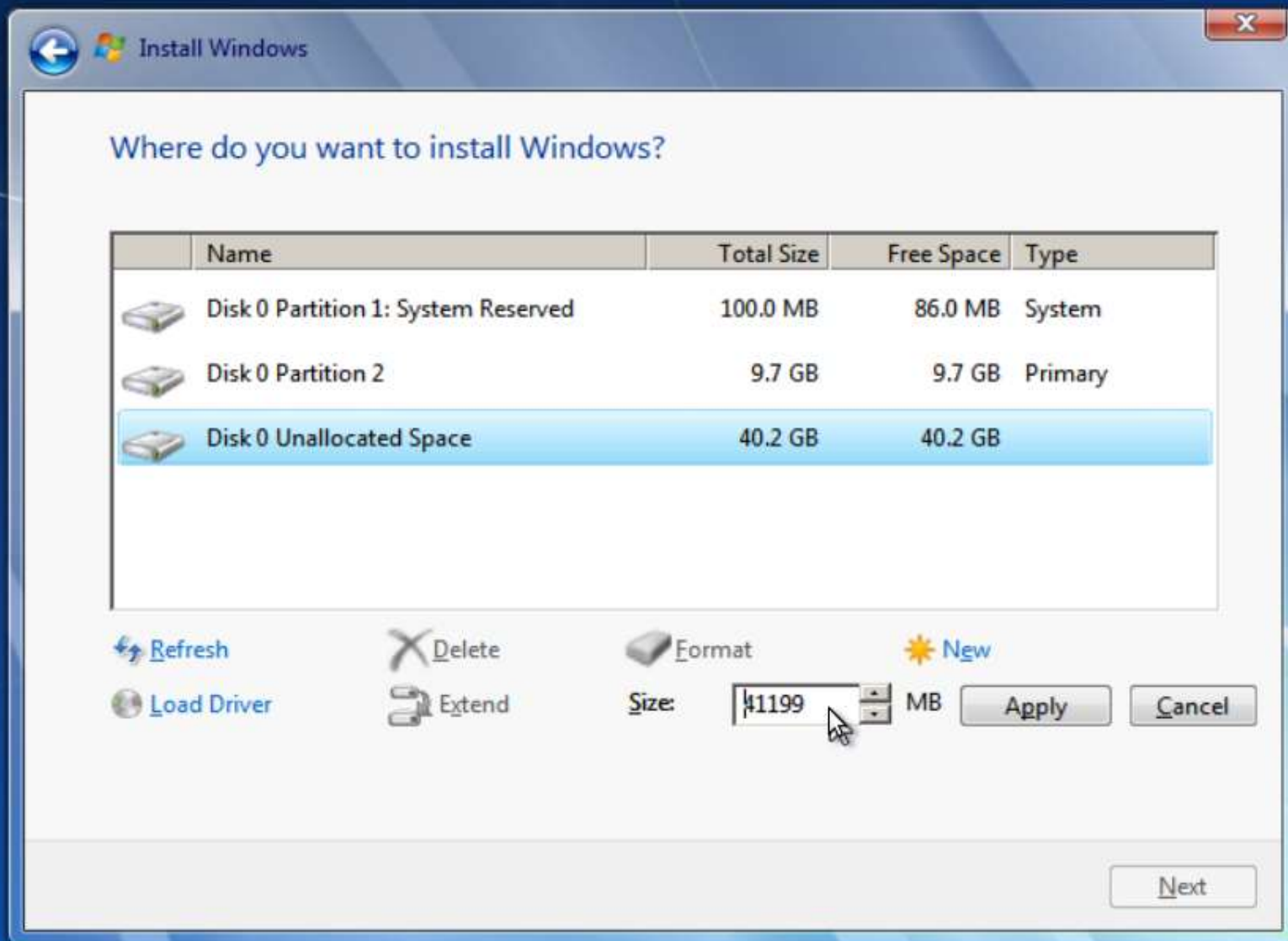


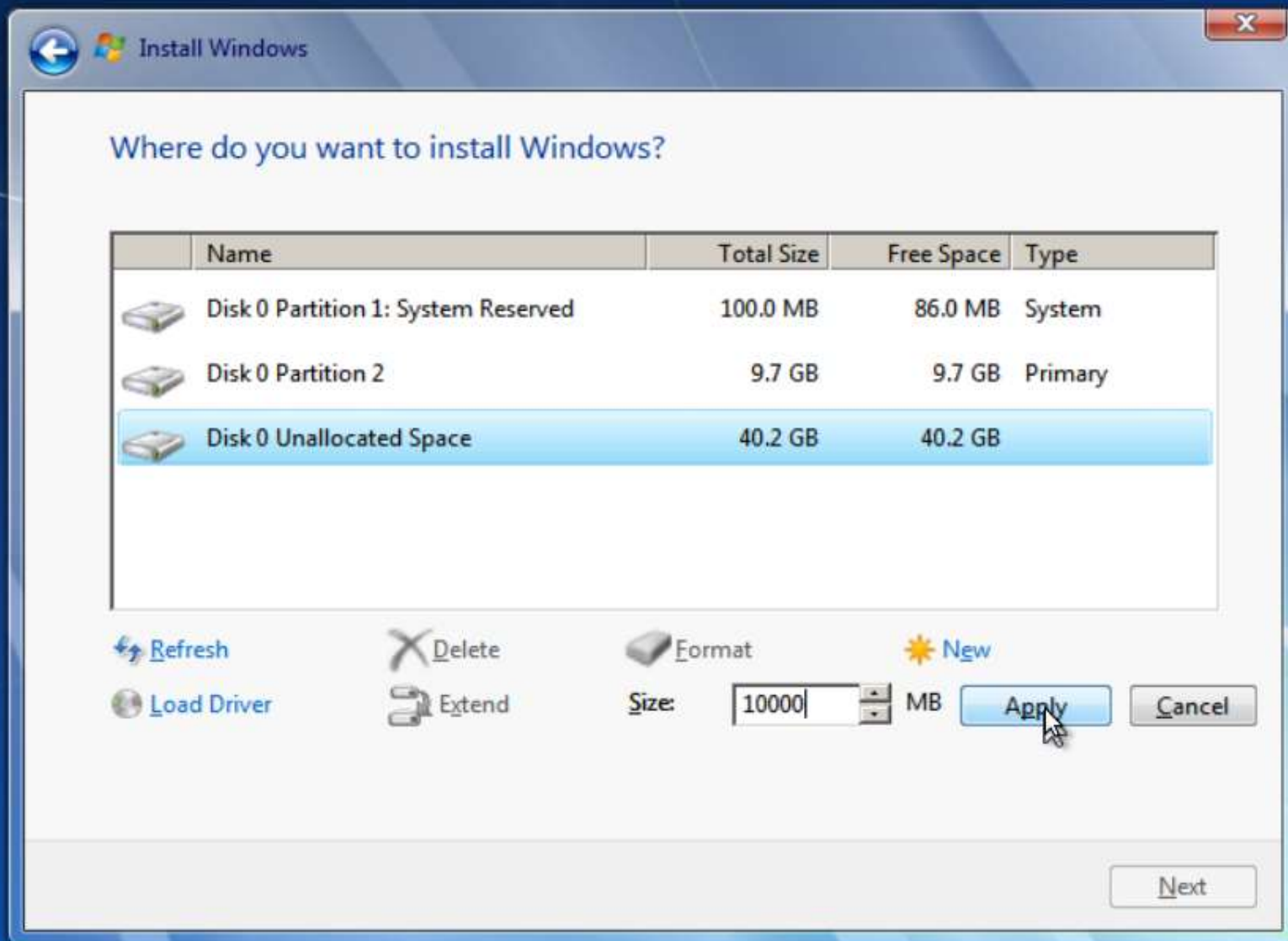


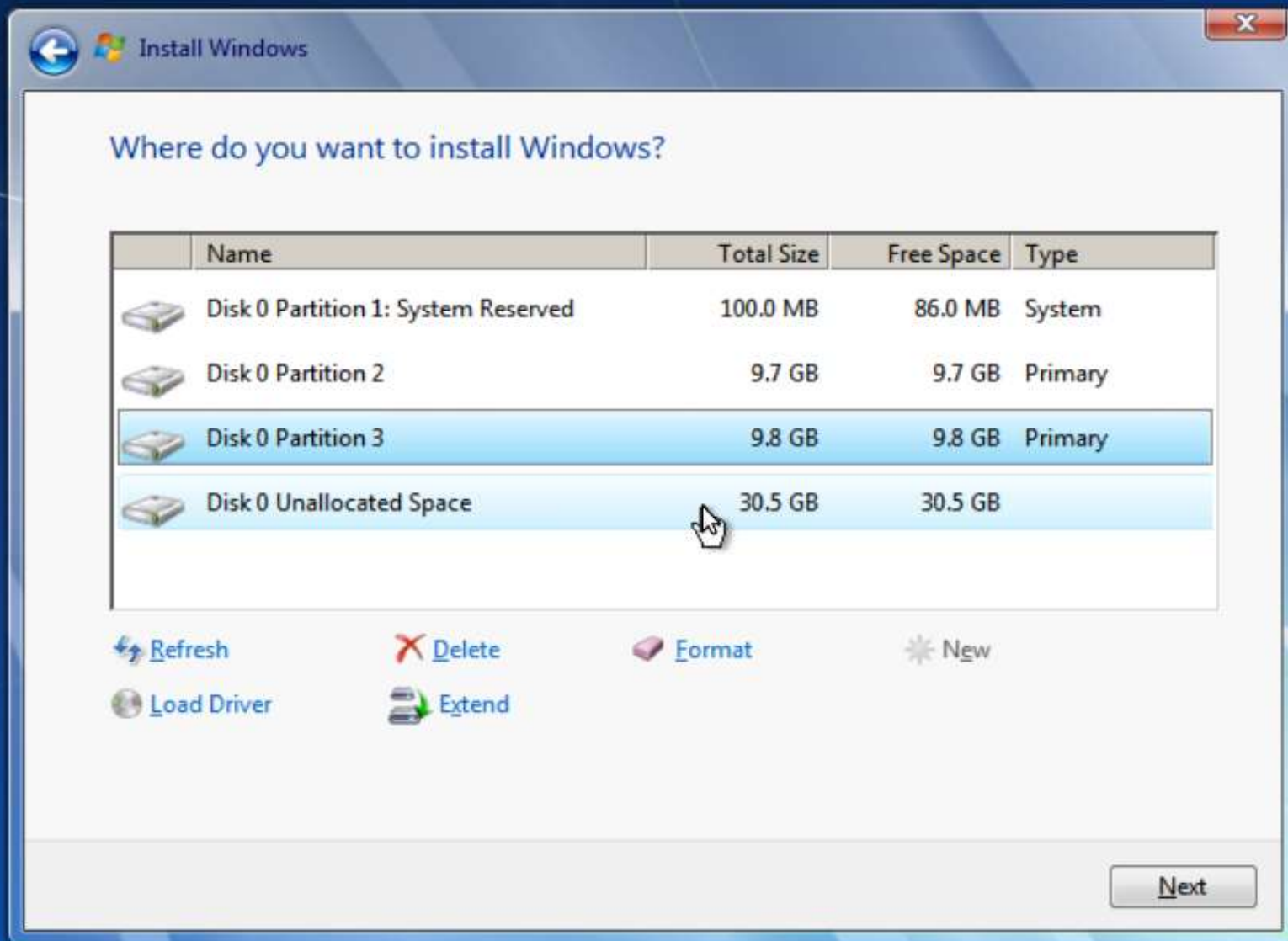


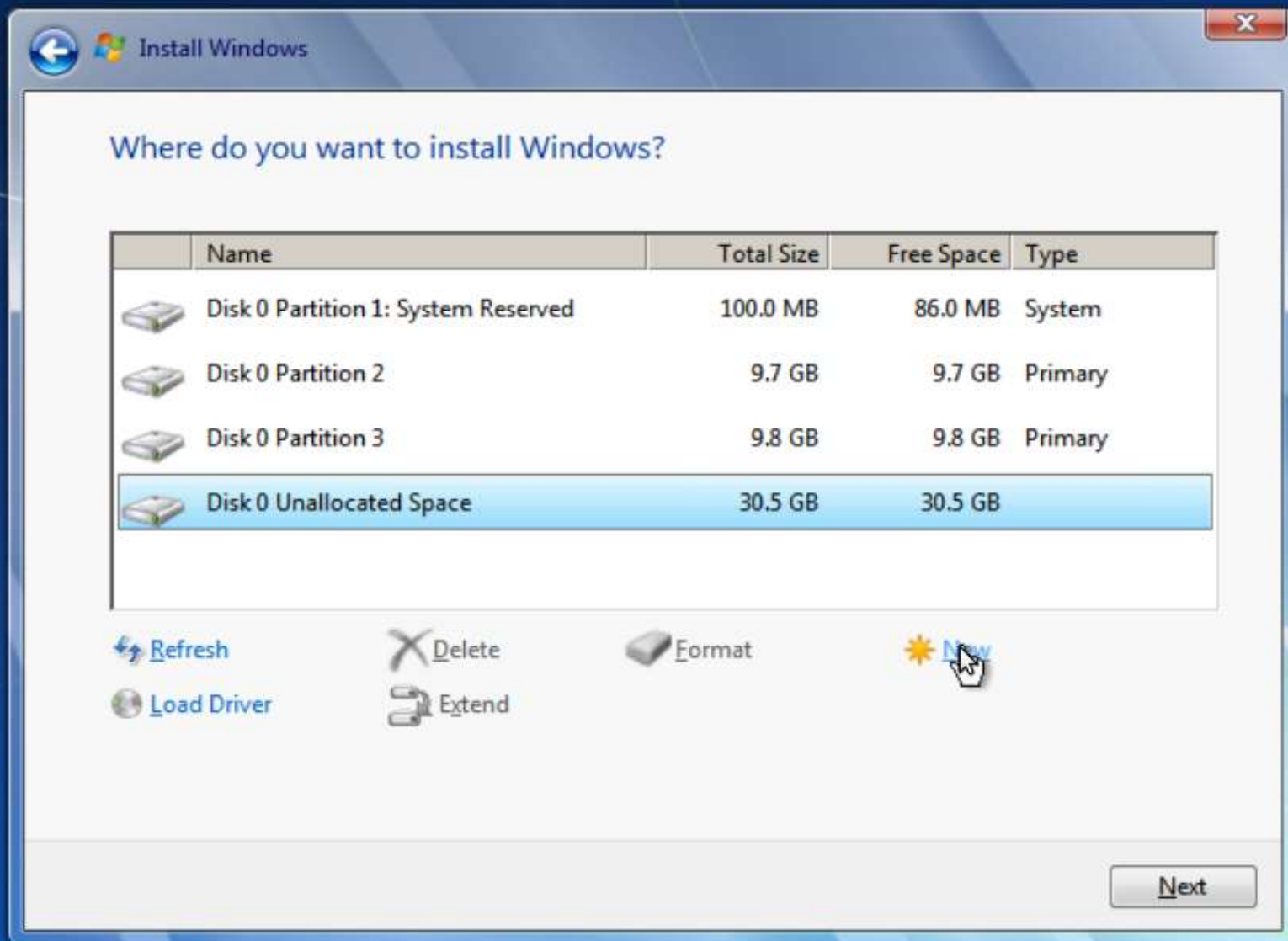


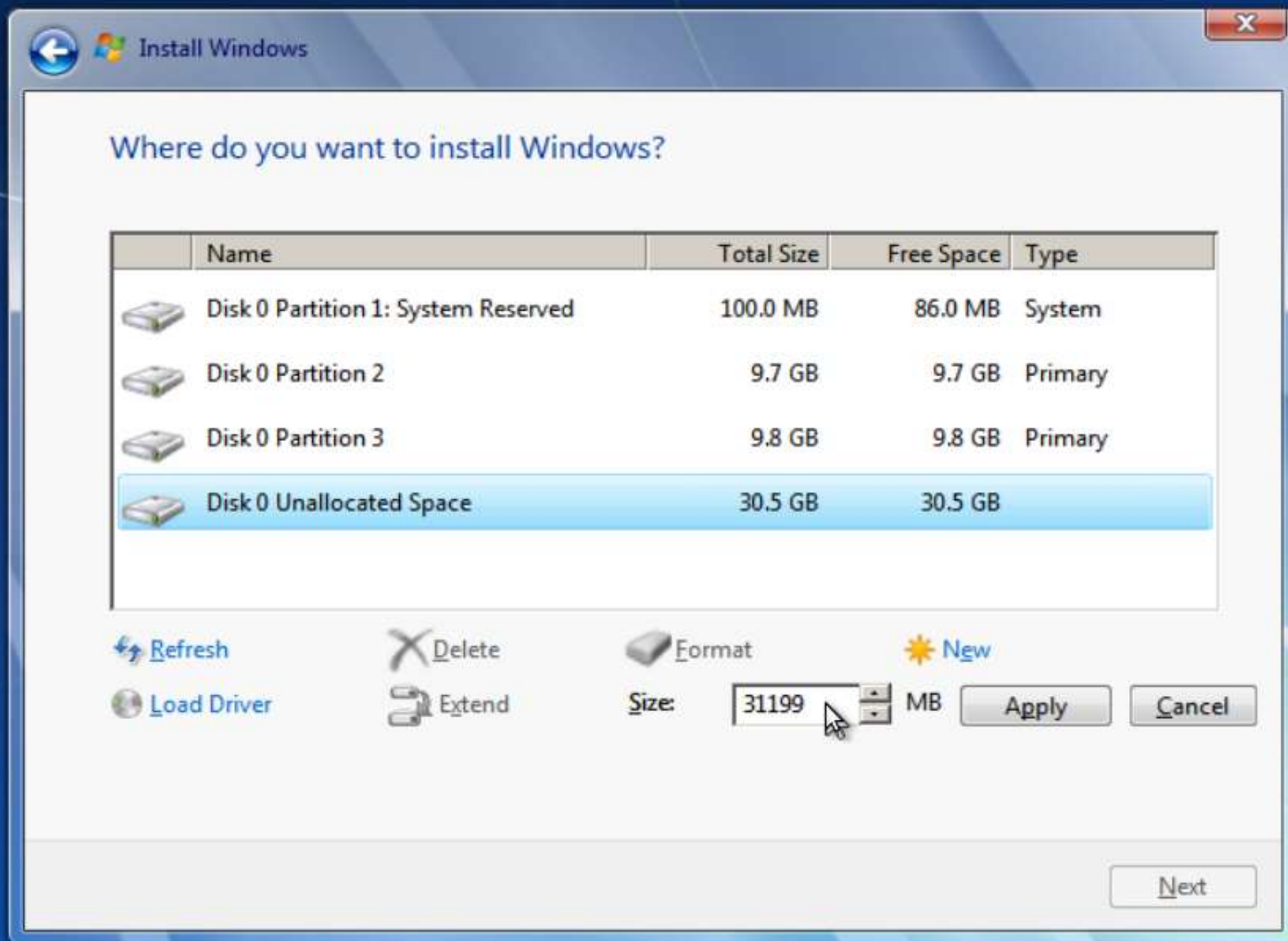


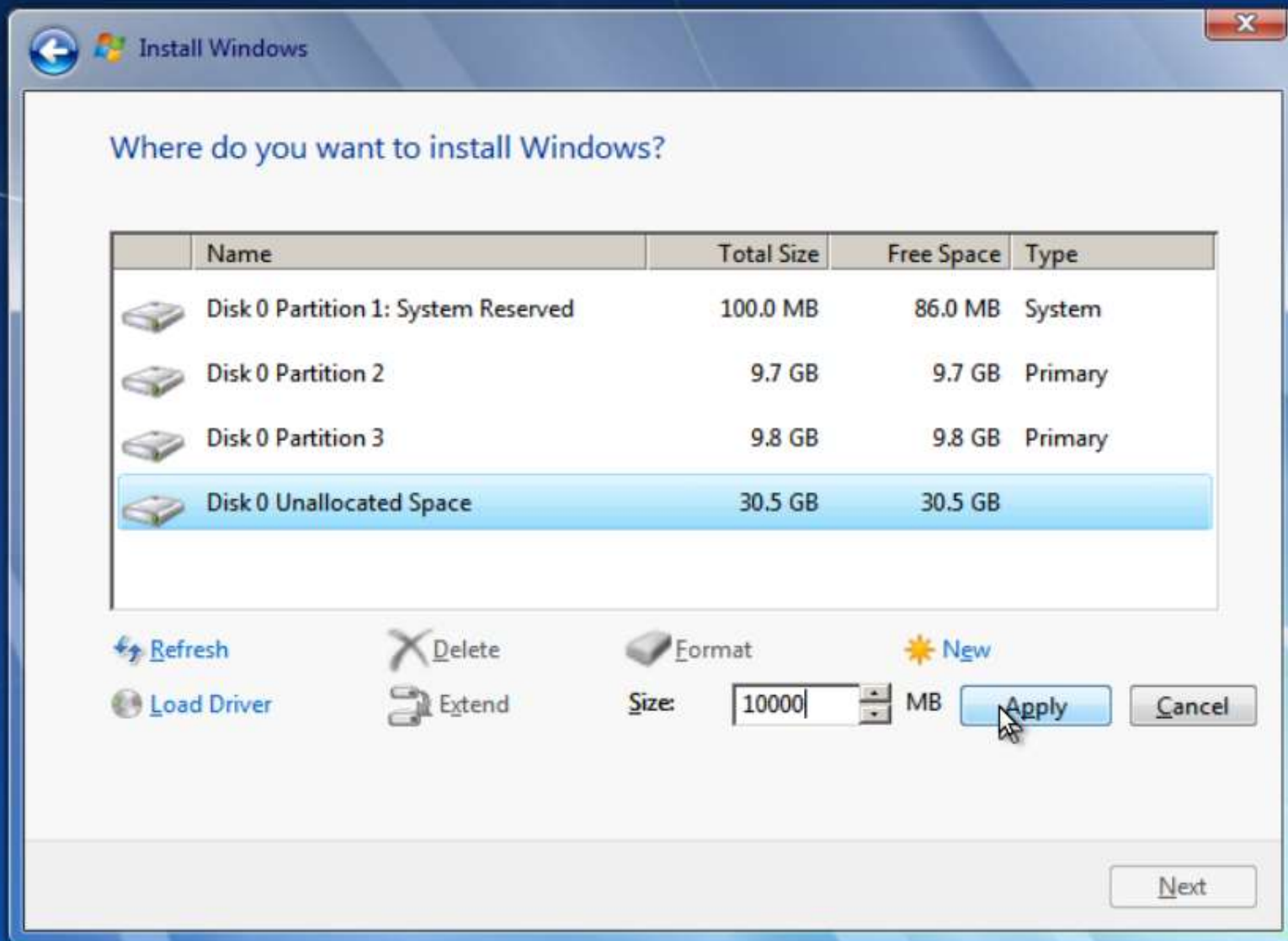


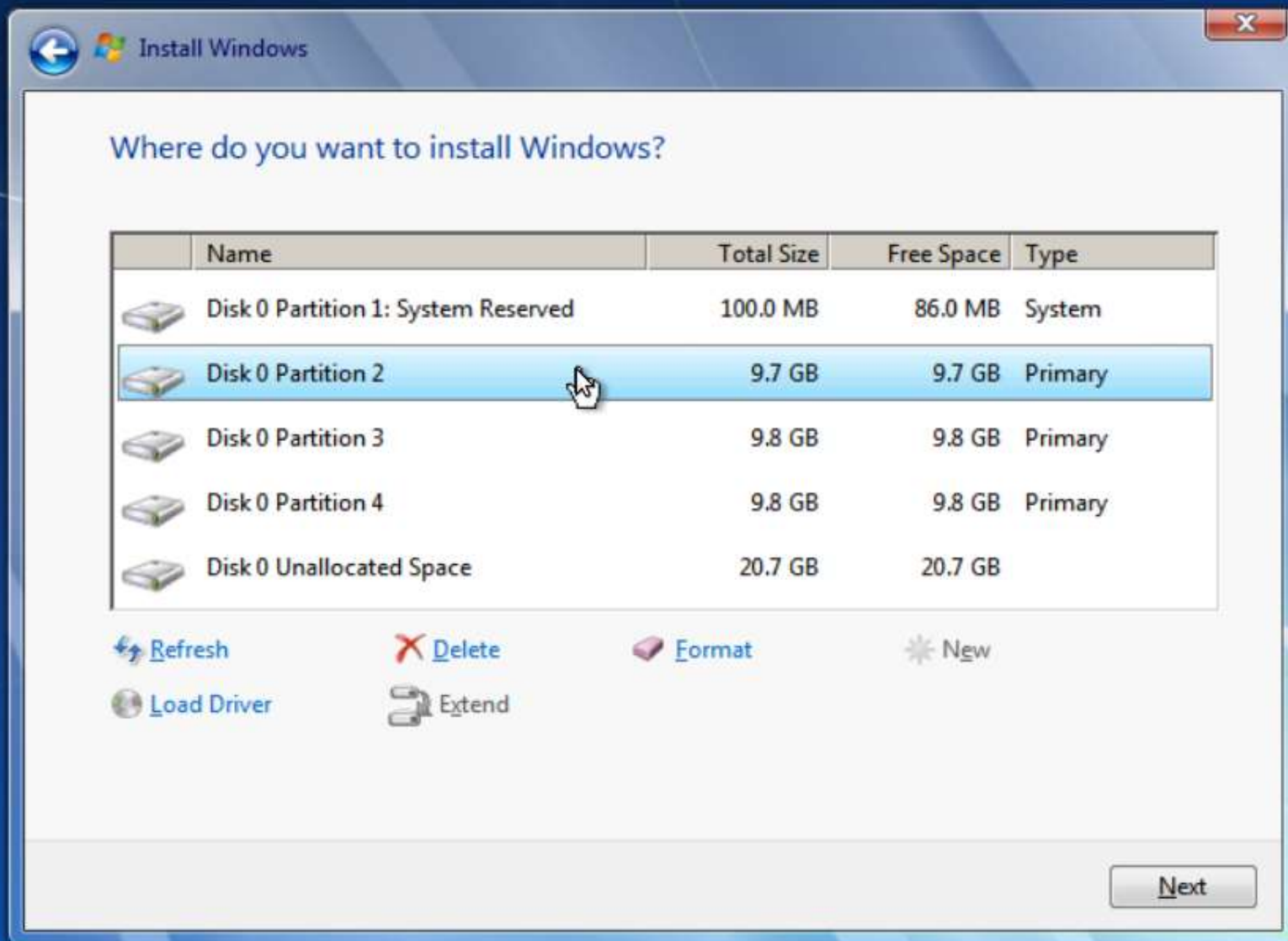


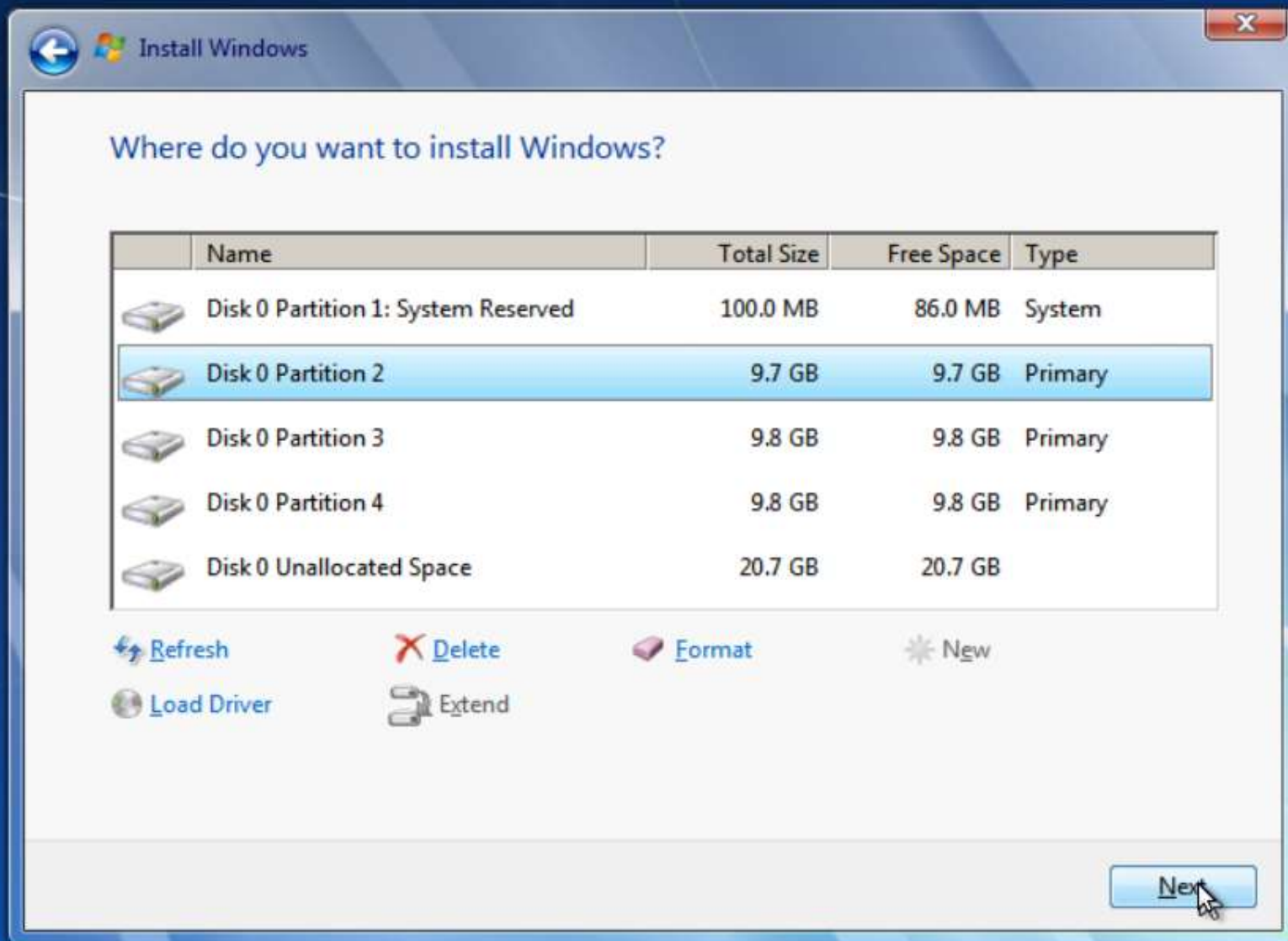


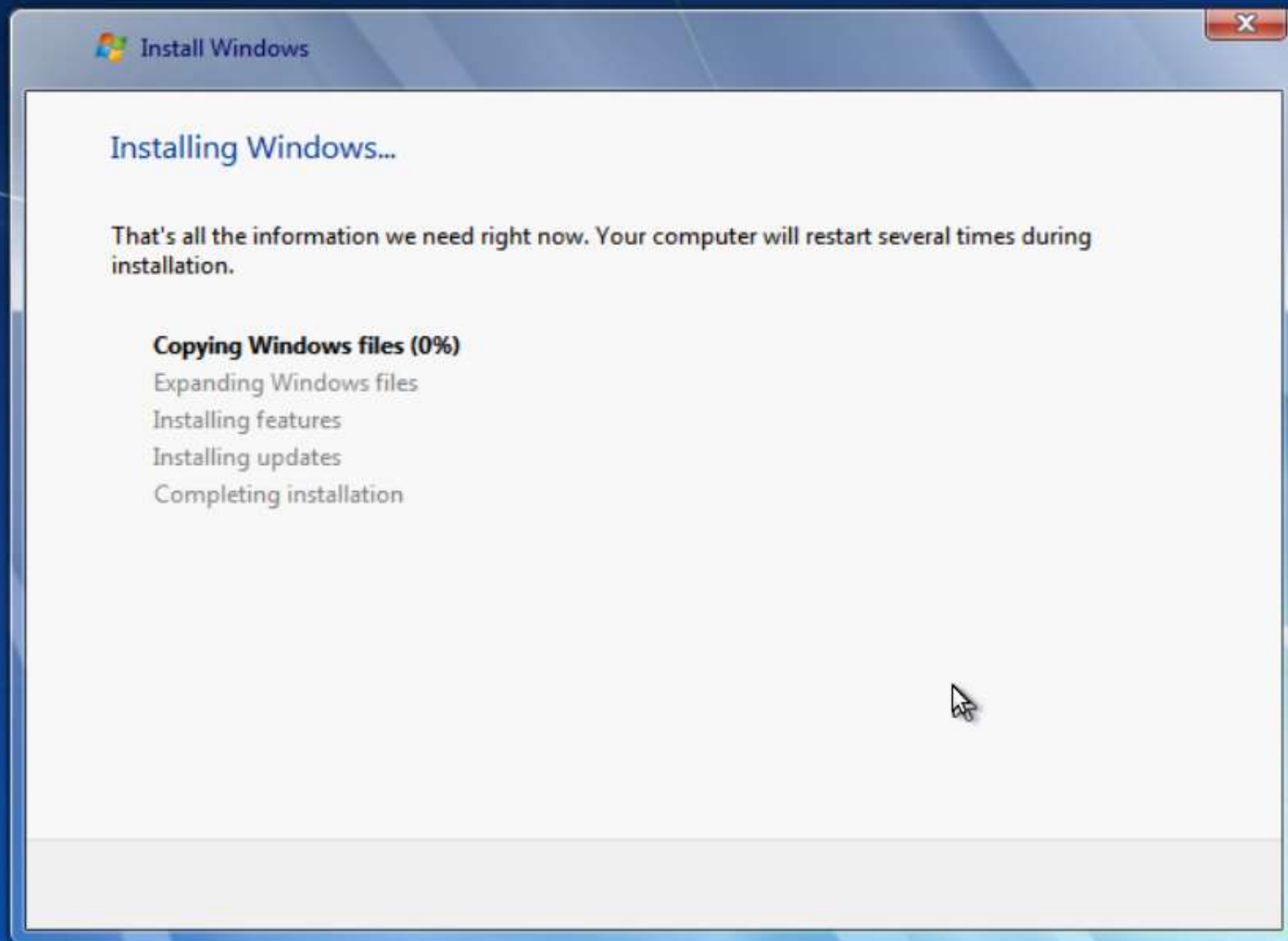


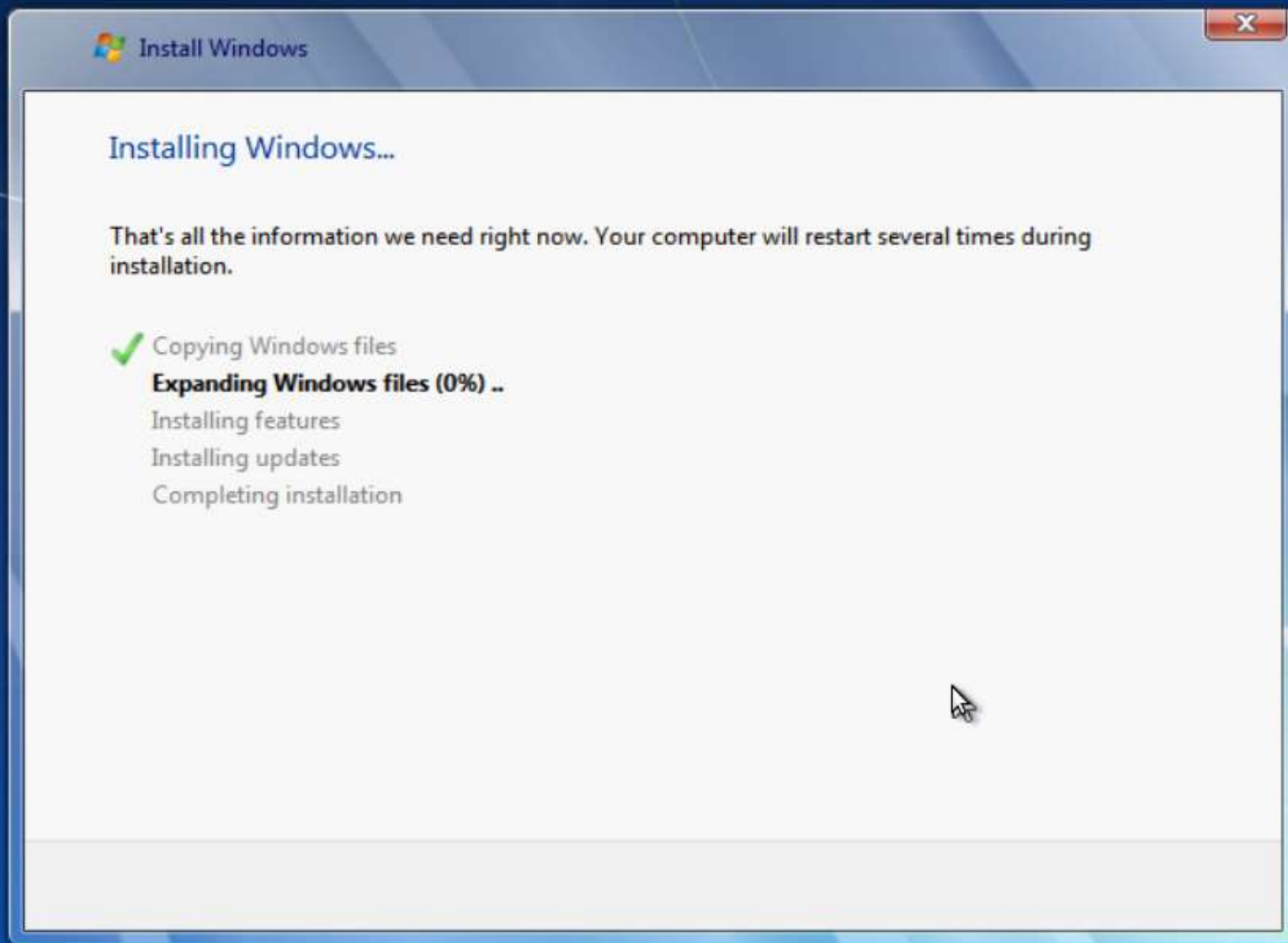




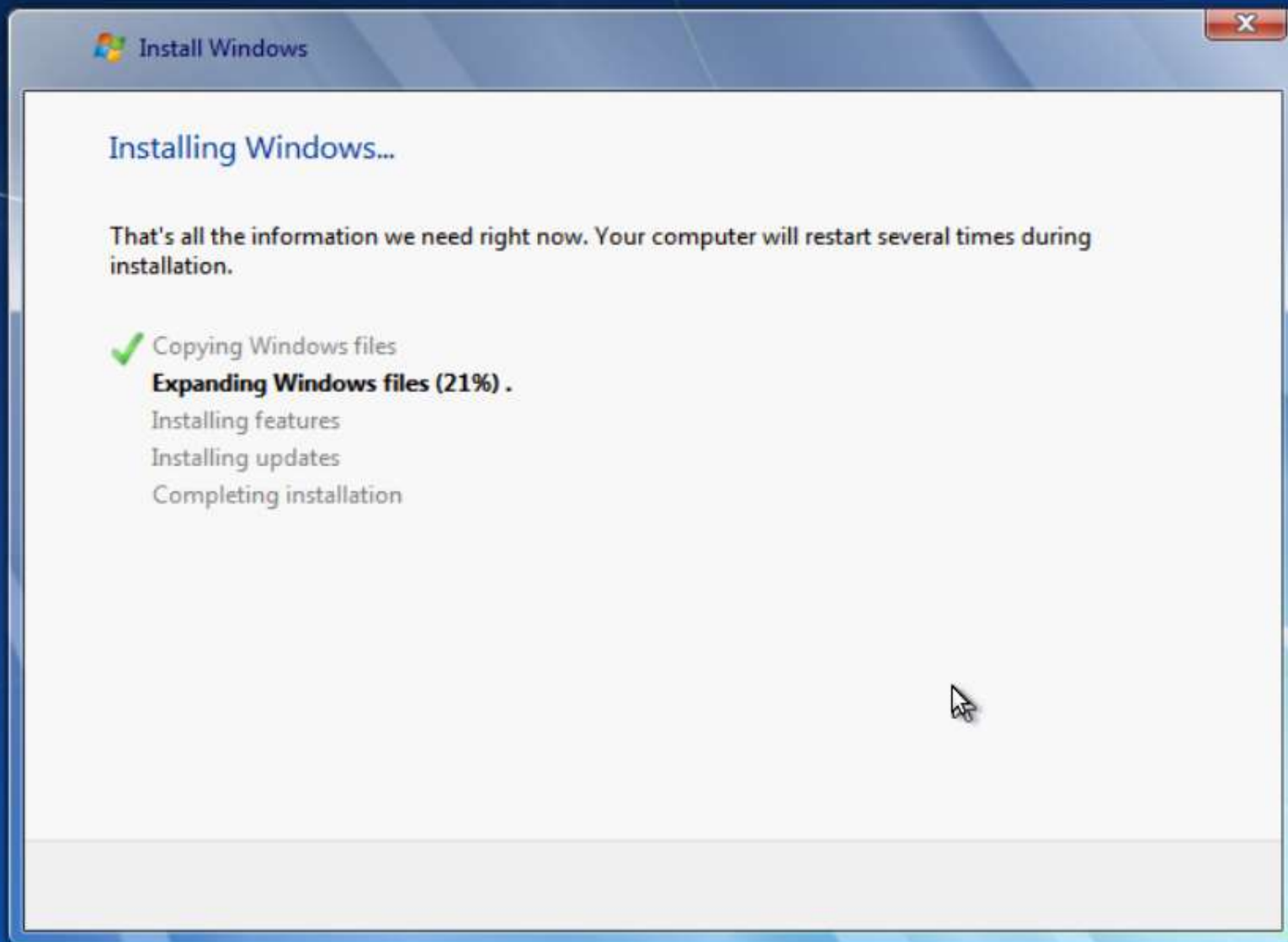






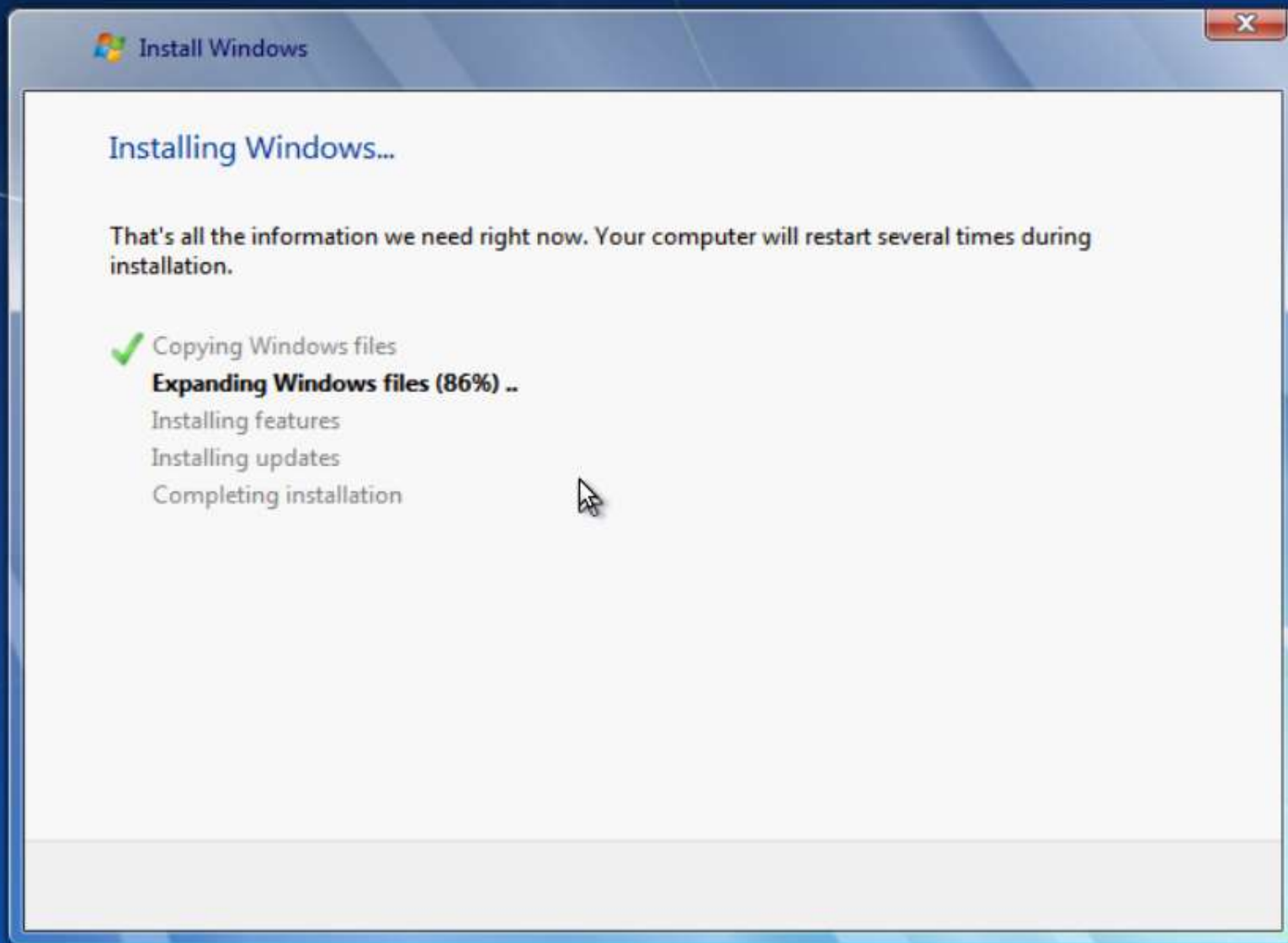




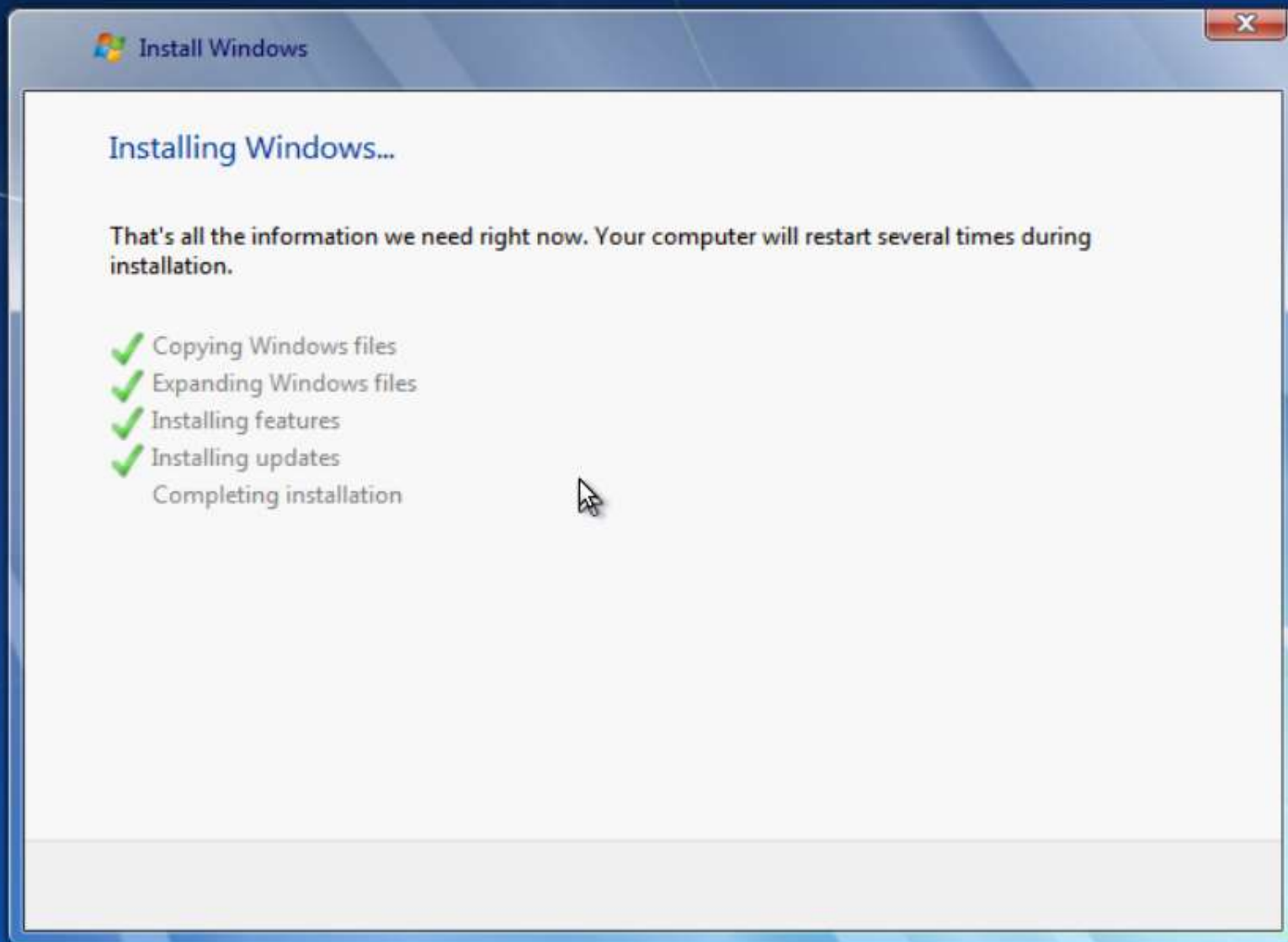













 Install Windows

Windows needs to restart to continue



Restarting in 8 seconds



[Restart now](#)

Install Windows


Windows needs to restart to continue



Restarting in 3 seconds



[Restart now](#)

 Install Windows

Windows needs to restart to continue

Restarting in 1 second

[Restart now](#)

Press F12 to select boot device.

Press any key to boot from CD or DVD.._





Starting Windows

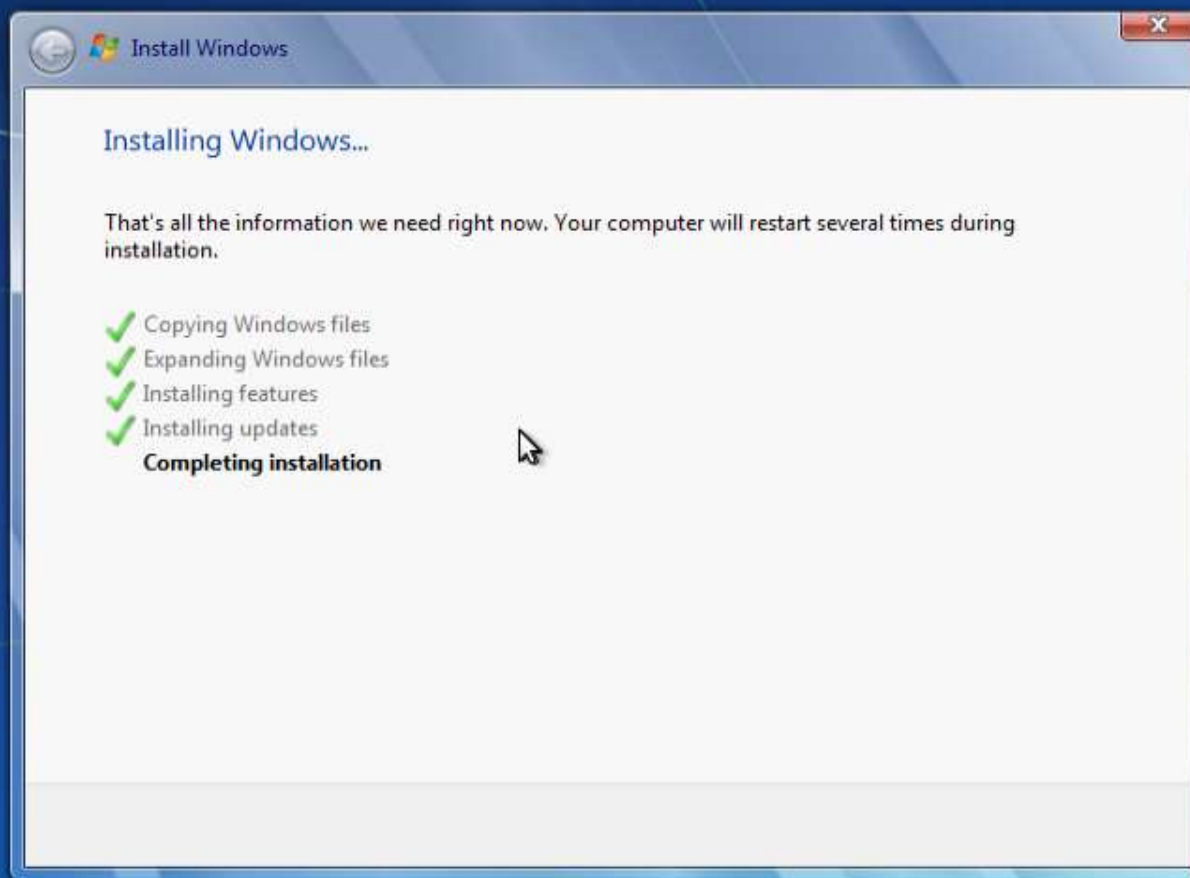


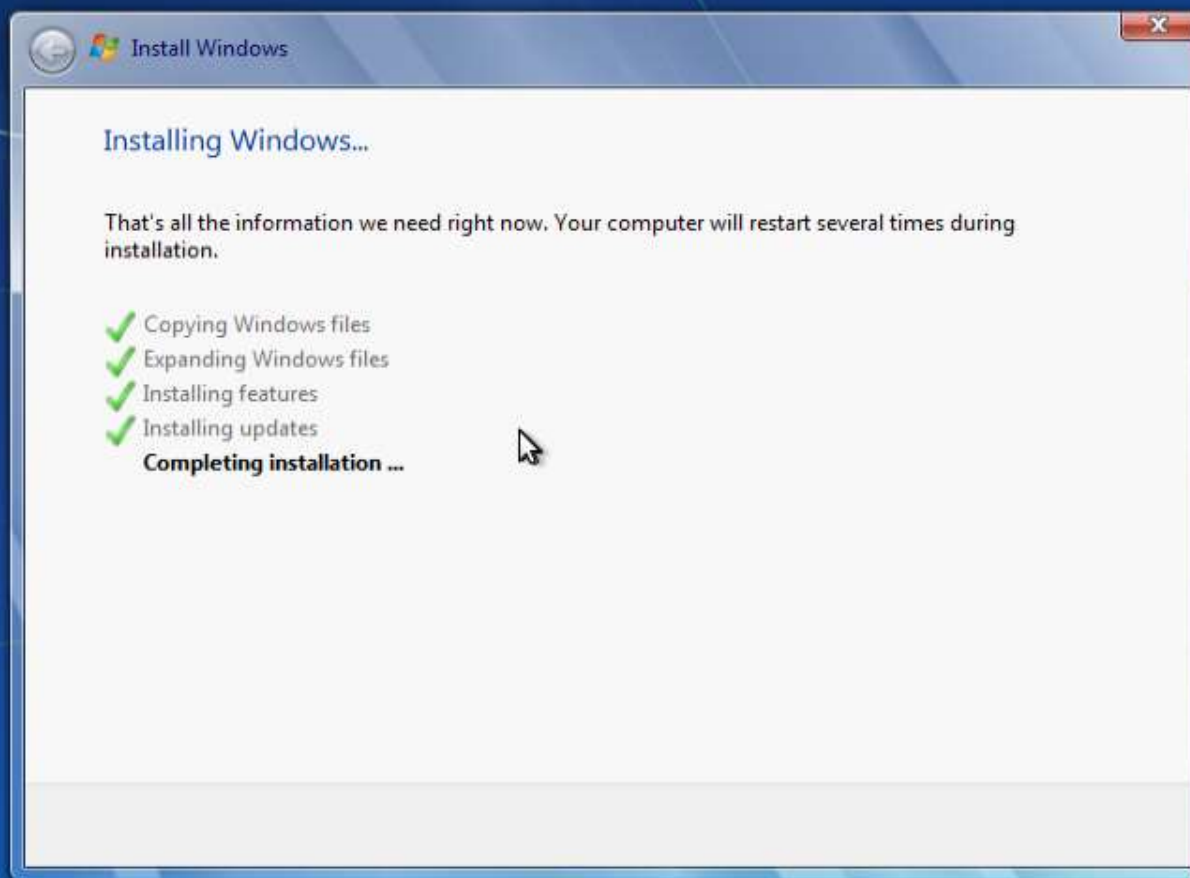
Starting Windows

Setup is updating registry settings.



Setup is starting services





Setup will continue after restarting your computer

Press any key to boot from CD or DVD. _





Starting Windows



Setup is preparing your computer for first use



Set Up Windows

Windows 7 Ultimate

Choose a user name for your [account](#) and name your computer to distinguish it on the network.

Type a user name (for example, John):

Type a [computer name](#):

 Copyright © 2009 Microsoft Corporation. All rights reserved.



Set Up Windows

Set a password for your account

Creating a password is a smart security precaution that helps protect your user account from unwanted users. Be sure to remember your password or keep it in a safe place.

Type a password (recommended):

Retype your password:

Type a password hint (required):

Choose a word or phrase that helps you remember your password.
If you forget your password, Windows will show you your hint.



Set Up Windows

Type your Windows product key

You can find your Windows product key on a label included with the package that came with your copy of Windows. The label might also be on your computer case. Activation pairs your product key with your computer.

The product key looks similar to this:

PRODUCT KEY: XXXXX-XXXXX-XXXXX-XXXXX-XXXXX

(dashes will be added automatically)

Automatically activate Windows when I'm online

[What is activation?](#)

[Read our privacy statement](#)

Next



Set Up Windows

Help protect your computer and improve Windows automatically



Use recommended settings

Install important and recommended updates, help make Internet browsing safer, check online for solutions to problems, and help Microsoft improve Windows.



Install important updates only

Only install security updates and other important updates for Windows.



Ask me later

Until you decide, your computer might be vulnerable to security threats.

[Learn more about each option](#)

When you use recommended settings or install updates only, some information is sent to Microsoft. The information is not used to identify you or contact you. To turn off these settings later, search for 'Turn off recommended setting' in Help and Support. [Read the privacy statement](#)

Set Up Windows

Review your time and date settings

Time zone:


(UTC-08:00) Pacific Time (US & Canada)

Automatically adjust clock for Daylight Saving Time

Date:

| August, 2013 | | | | | | |
|--------------|----|----|----|----|----|----|
| Su | Mo | Tu | We | Th | Fr | Sa |
| 28 | 29 | 30 | 31 | 1 | 2 | 3 |
| 4 | 5 | 6 | 7 | 8 | 9 | 10 |
| 11 | 12 | 13 | 14 | 15 | 16 | 17 |
| 18 | 19 | 20 | 21 | 22 | 23 | 24 |
| 25 | 26 | 27 | 28 | 29 | 30 | 31 |
| 1 | 2 | 3 | 4 | 5 | 6 | 7 |

Time:

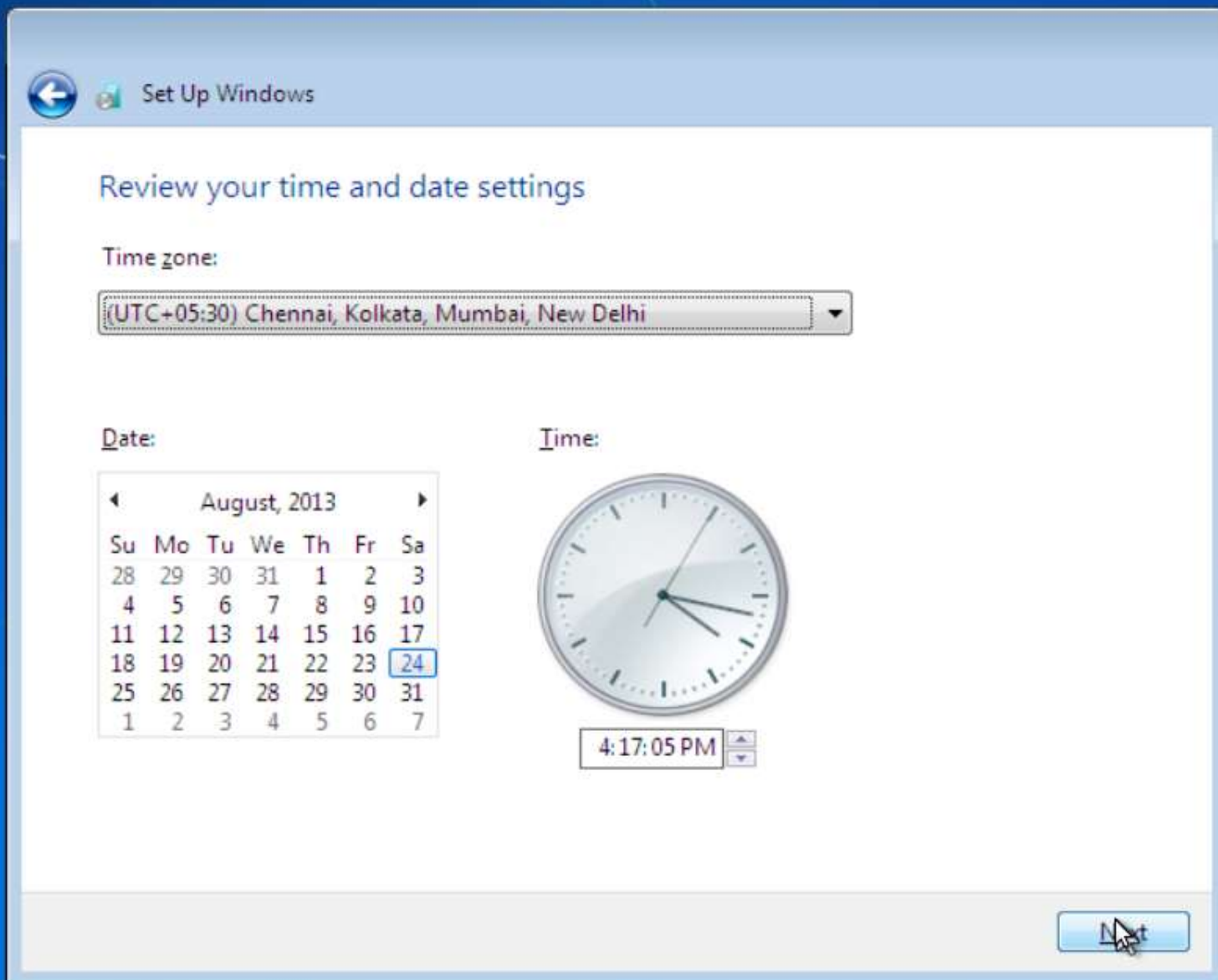


4:16:52 PM

Next

(UTC+03:00) Baghdad
(UTC+03:00) Kuwait, Riyadh
(UTC+03:00) Moscow, St. Petersburg, Volgograd
(UTC+03:00) Nairobi
(UTC+03:00) Tbilisi
(UTC+03:30) Tehran
(UTC+04:00) Abu Dhabi, Muscat
(UTC+04:00) Baku
(UTC+04:00) Port Louis
(UTC+04:00) Yerevan
(UTC+04:30) Kabul
(UTC+05:00) Ekaterinburg
(UTC+05:00) Islamabad, Karachi
(UTC+05:00) Tashkent
(UTC+05:30) Chennai, Kolkata, Mumbai, New Delhi
(UTC+05:30) Sri Jayawardenepura
(UTC+05:45) Kathmandu
(UTC+06:00) Almaty, Novosibirsk
(UTC+06:00) Astana, Dhaka
(UTC+06:30) Yangon (Rangoon)
(UTC+07:00) Bangkok, Hanoi, Jakarta
(UTC+07:00) Krasnoyarsk
(UTC+08:00) Beijing, Chongqing, Hong Kong, Urumqi
(UTC+08:00) Irkutsk, Ulaan Bataar
(UTC+08:00) Kuala Lumpur, Singapore
(UTC+08:00) Perth
(UTC+08:00) Taipei
(UTC+09:00) Osaka, Sapporo, Tokyo
(UTC+09:00) Seoul
(UTC+09:00) Yakutsk

Next





Set Up Windows

Select your computer's current location

This computer is connected to a network. Windows will automatically apply the correct network settings based on the network's location.

**Home network**

If all the computers on this network are at your home, and you recognize them, this is a trusted home network. Don't choose this for public places such as coffee shops or airports.

**Work network**

If all the computers on this network are at your workplace, and you recognize them, this is a trusted work network. Don't choose this for public places such as coffee shops or airports.

**Public network**


If you don't recognize all the computers on the network (for example, you're in a coffee shop or airport, or you have mobile broadband), this is a public network and is not trusted.

If you aren't sure, select Public network.

Set Up Windows

Select your computer's current location


This computer is connected to a network. Windows will automatically apply the correct network settings based on the network's location.



Home network

If all the computers on this network are at your home, and you recognize them, this is a trusted home network. Don't choose this for public places such as coffee shops or airports.

Connecting to your network and applying settings...





Set Up Windows

Select your computer's current location

This computer is connected to a network. Windows will automatically apply the correct network settings based on the network's location.

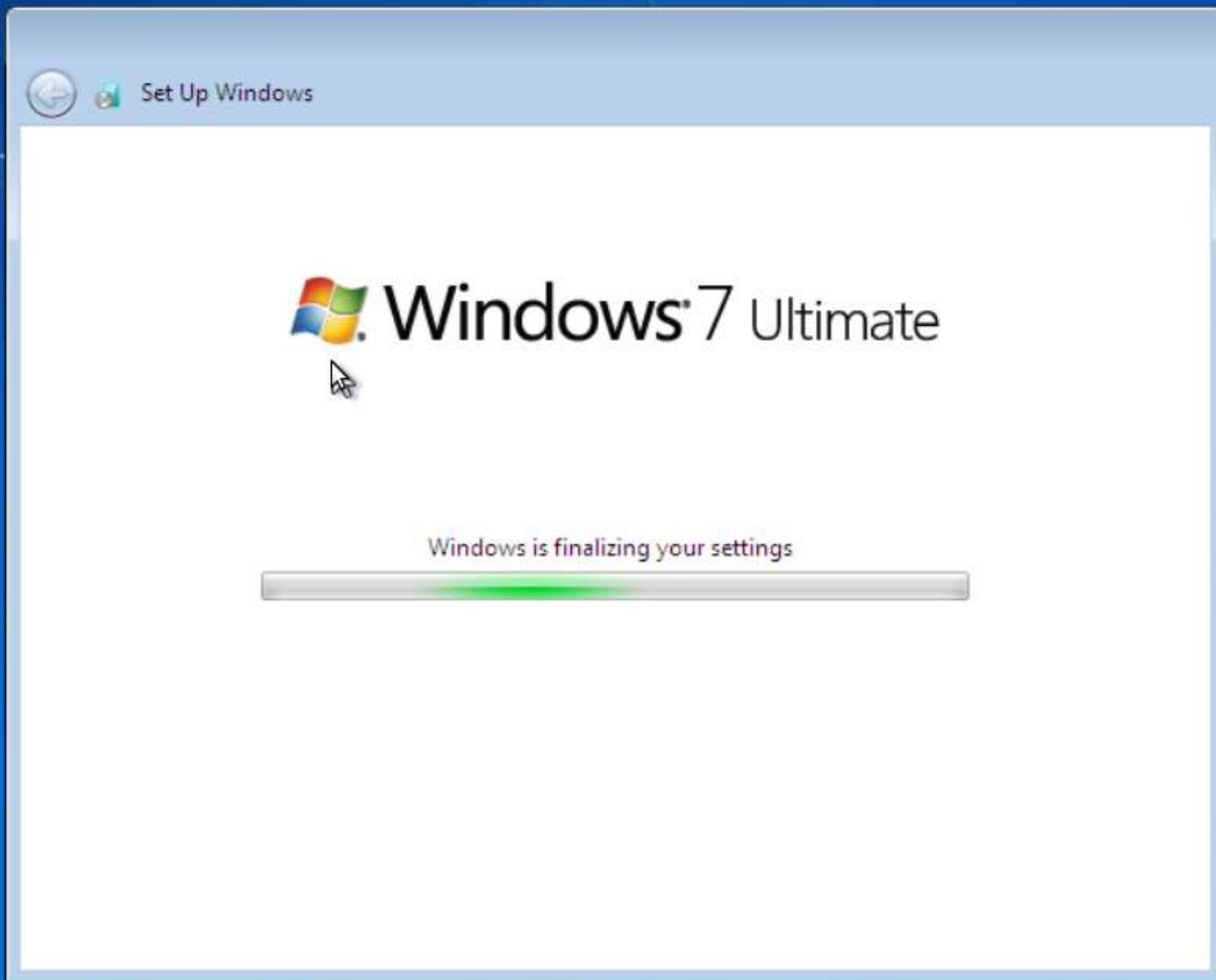


Home network

If all the computers on this network are at your home, and you recognize them, this is a trusted home network. Don't choose this for public places such as coffee shops or airports.

Connecting to your network and applying settings...





 Windows 7 Ultimate

Windows is finalizing your settings



Welcome

Windows 7 Ultimate

 Preparing your desktop...

 Windows 7 Ultimate



Recycle Bin





Recycle Bin

- Getting Started
- Windows Media Center
- Calculator
- Sticky Notes
- Snipping Tool
- Paint
- Remote Desktop Connection
- Magnifier
- Solitaire
- All Programs

Search programs and files



- India
- Documents
- Pictures
- Music
- Games
- Computer
- Control Panel
- Devices and Printers
- Default Programs
- Help and Support

Shut down

